

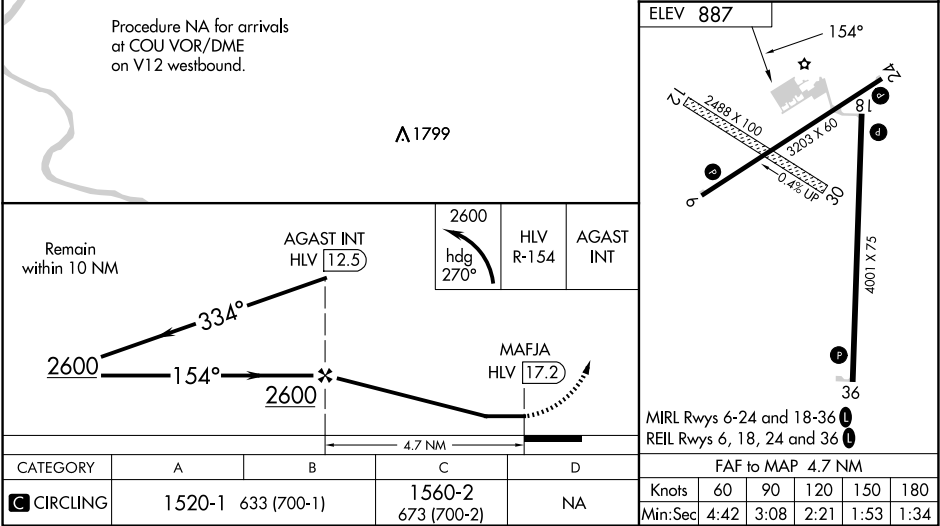
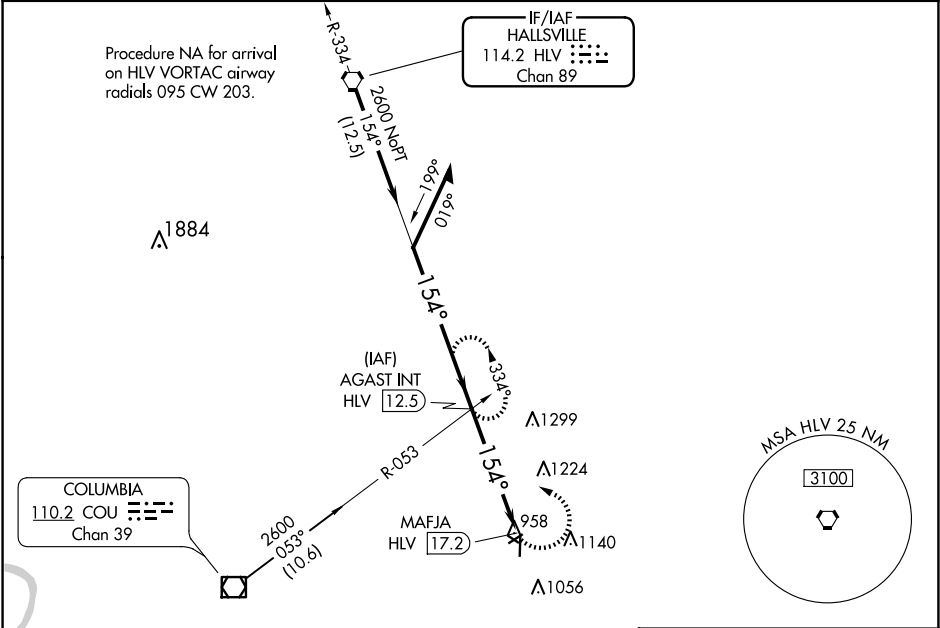
VORTAC HLW 114.2 Chan 89	APP CRS 154°	Rwy Idg TDZE Apt Elev N/A N/A 887
--	------------------------	---

VOR-A

ELTON HENSLEY MEML (F'TT)

<div><div>▼</div><div>▲ NA</div></div> <div>Circling NA to Rwy 12 and 30. Circling Rwy 18, 24 NA at night. Use Columbia altimeter setting; when not received use Jefferson City altimeter setting and increase all MDA 80 feet, and Circling Cat C visibility ¼ SM.</div>	<div>MISSED APPROACH: Climbing left turn to 2600 on heading 270° and HLW VORTAC R-154 to AGAST INT/12.5 DME and hold.</div>
---	---

COU ASOS 128.45	MIZZU APP CON 124.375 353.925	UNICOM 122.7 (CTAF)
---------------------------	---	-------------------------------



NC-3, 10 JUL 2025 to 07 AUG 2025

NC-3, 10 JUL 2025 to 07 AUG 2025