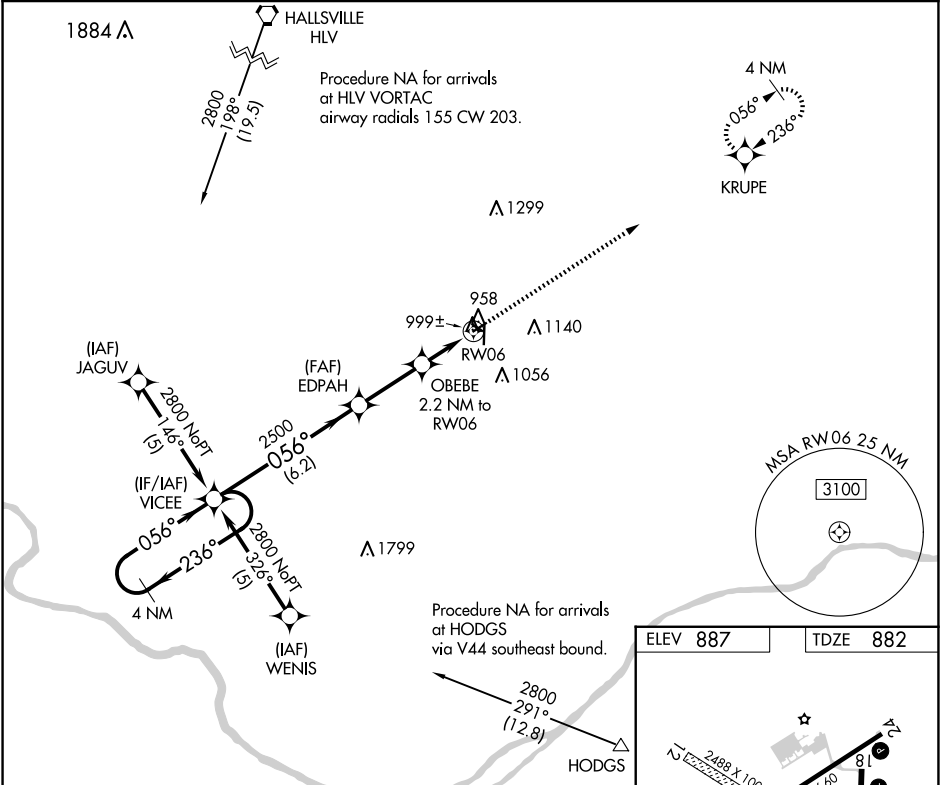


APP CRS	Rwy Idg	3203
056°	TDZE	882
	Apt Elev	887

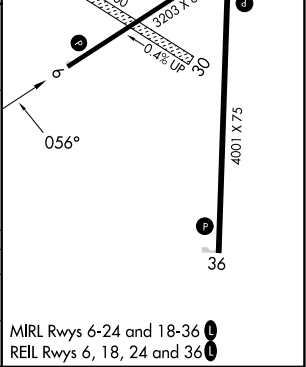
RNAV (GPS) RWY 6

ELTON HENSLEY MEML (F'TT)

RNP APCH.		MISSED APPROACH: Climb to 2800 direct KRUPE and hold.
▼ ▲ NA Use Columbia altimeter setting; when not received, use Jefferson City altimeter setting and increase all MDA 80 feet. Rwy 6 helicopter visibility reduction below ¾ SM NA. Circling Rwy 18, 24 NA at night.		
COU ASOS	MIZZU APP CON	UNICOM
128.45	124.375 353.925	122.7 (CTAF) 1



4 NM Holding Pattern		VGSI and descent angles not coincident (VGSI Angle 3.00/TCH 46).		2800	KRUPE
VICEE		EDPAH		OBEBE 2.2 NM to RW06	
2800 ← 236°		056° →		3.04° TCH 40	
2500		056°		1620	
6.2 NM		2.7 NM		2.2 NM	
CATEGORY	A	B	C	D	
LNAV MDA	1300-1	418 (500-1)	1300-1¼ 418 (500-1¼)	NA	
CIRCLING	1380-1 493 (500-1)	1480-1 593 (600-1)	1560-2 673 (700-2)	NA	



NC-3, 10 JUL 2025 to 07 AUG 2025

NC-3, 10 JUL 2025 to 07 AUG 2025