

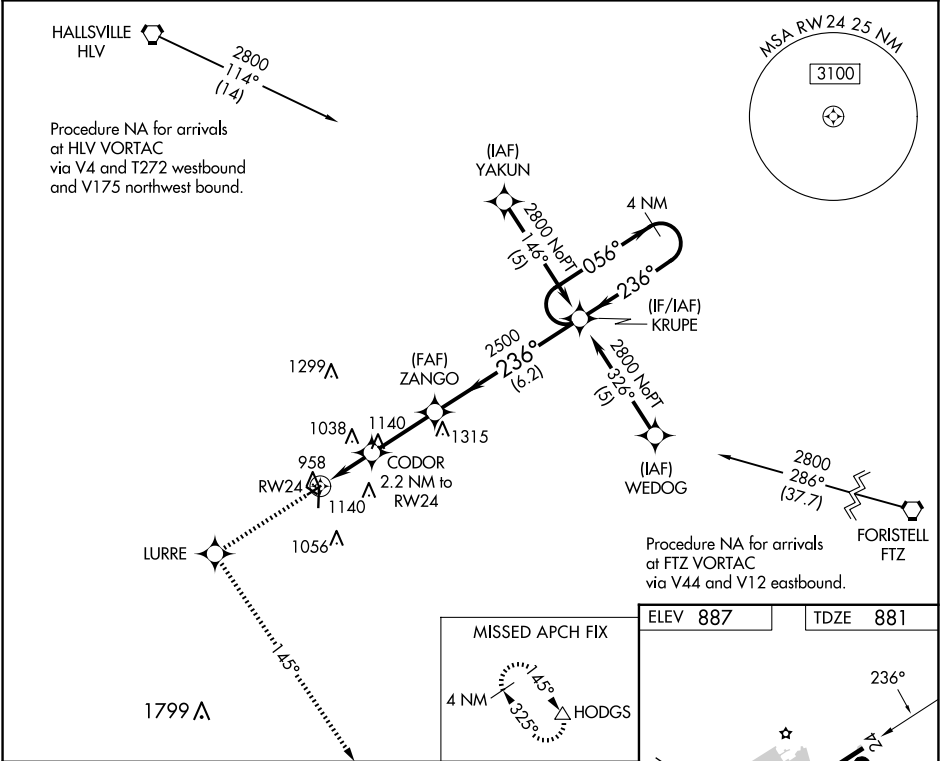
APP CRS	Rwy Idg	3203
236°	TDZE	881
	Apt Elev	887




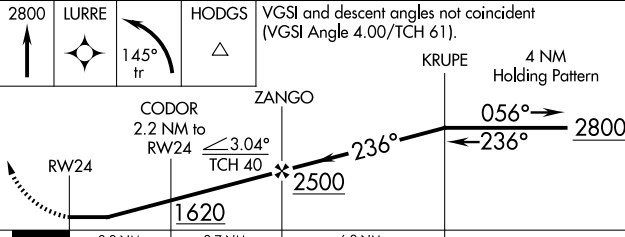
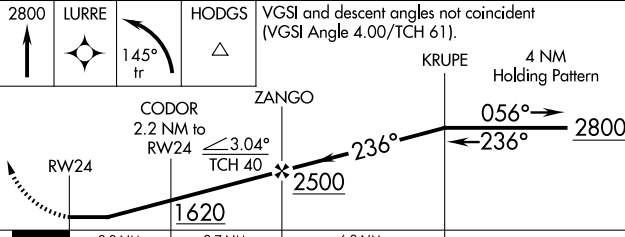

RNAV (GPS) RWY 24

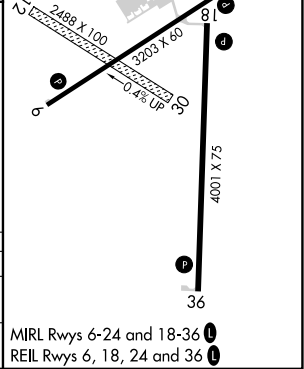
ELTON HENSLEY MEML (F'TT)

RNP APCH.	<p>Use Columbia altimeter setting; when not received, use Jefferson City altimeter setting and increase all MDA 80 feet, and increase LNAV Cat C visibility ¼ mile. Rwy 24 helicopter visibility reduction below 1 SM NA. Circling NA to Rws 12 and 30. Straight-in Rwy 24 NA at night, Circling Rwy 18, 24 NA at night.</p>	MISSED APPROACH: Climb to 2800 direct LURRE and left turn via 145° track to HODGS and hold.
-----------	--	---

COU ASOS	MIZZU APP CON	UNICOM
128.45	124.375 353.925	122.7 (CTAF) 0



2800	LURRE	HODGS	VGSI and descent angles not coincident (VGSI Angle 4.00/TCH 61).	
				
				
CATEGORY	A	B	C	D
LNAV MDA	1320-1	439 (500-1)	1320-1¼ 439 (500-1¼)	NA
 CIRCLING	1380-1 493 (500-1)	1480-1 593 (600-1)	1560-2 673 (700-2)	NA



NC-3, 10 JUL 2025 to 07 AUG 2025

NC-3, 10 JUL 2025 to 07 AUG 2025