

APP CRS
172°

Rwy Idg
TDZE
Apt Elev

4000
1822
1822

RNAV (GPS) RWY 17
BUFFALO MUNI (BFK)

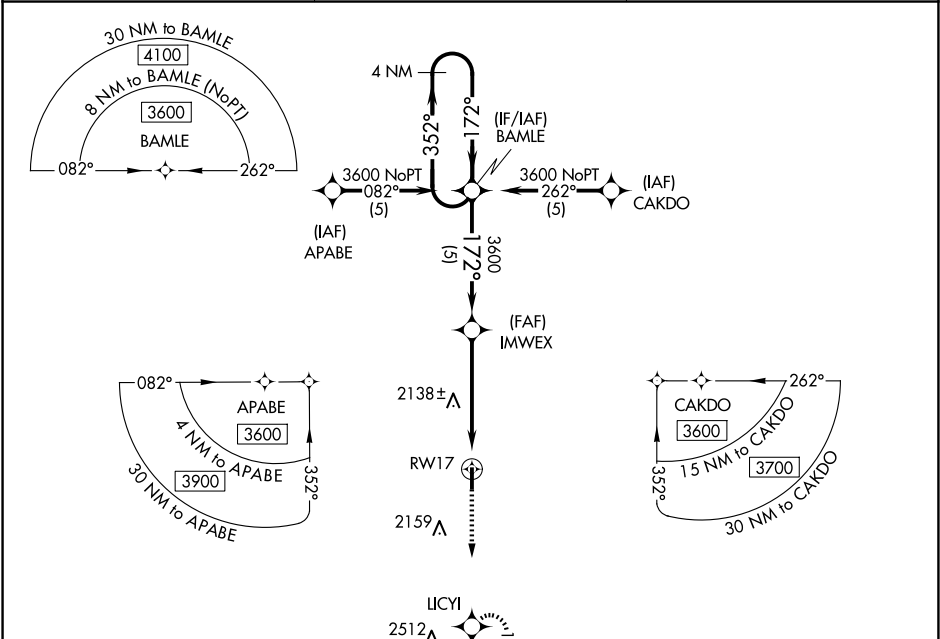
▼

NA

DME/DME RNP-0.3 NA. Use Woodward/West Woodward altimeter setting; if not received, procedure not authorized.

MISSED APPROACH: Climb to 3800 direct LICYI WP and hold.

AWOS-3 118.425	KANSAS CITY CENTER 126.95 379.2	CTAF 122.9 0
-------------------	------------------------------------	-----------------



ELEV 1822

TDZE 1822

172° to RWY17

4000 X 60

0.7% UP

35

4 NM Holding Pattern

BAMLE

IMWEX

3800

LICYI

3600

172°

352°

172°

3600

172°

3.28° TCH 40

RWY17

5 NM

5 NM

CATEGORY	A	B	C	D
LNAV MDA	2500-1	678 (700-1)	2500-2 678 (700-2)	NA
CIRCLING	2500-1	678 (700-1)	2500-2 678 (700-2)	NA

MIRL Rwy 17-35 0