

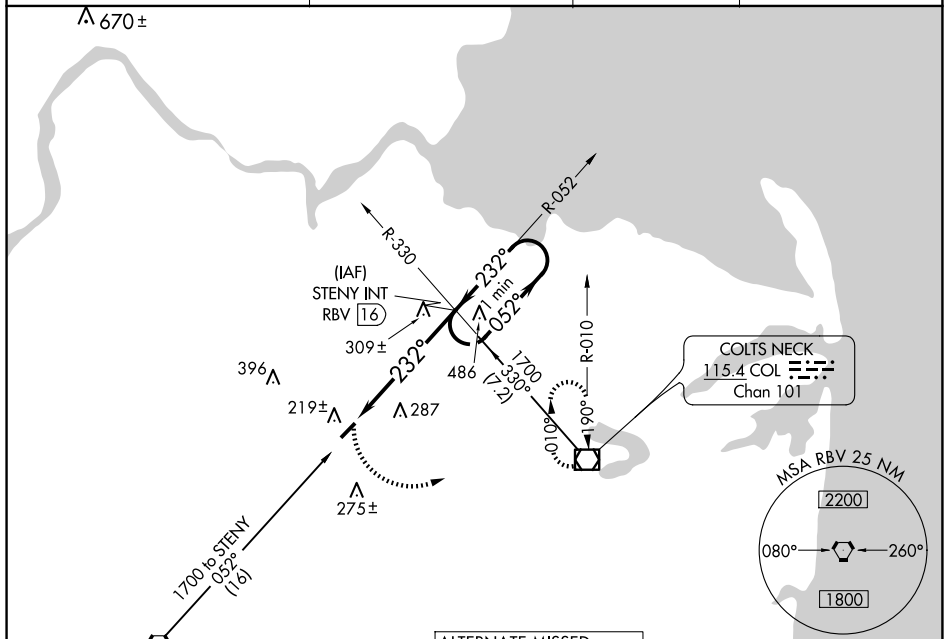
VORTAC RBV 113.8 Chan 85	APP CRS 232°	Rwy Idg 3194 TDZE 87 Apt Elev 87
--	------------------------	---

VOR RWY 24
OLD BRIDGE (3N6)

T Procedure NA at night. Helicopter visibility reduction below 1 SM
A NA. Use Belmar/Farmingdale altimeter setting; when not received,
 use Wrightstown altimeter setting and increase all MDA 20 feet.

MISSED APPROACH: Climbing
left turn to 2000 direct
COL VOR/DME and hold.

BLM AWOS-3PT 121.625	MC GUIRE APP CON 126.475 363.8	GCO 121.725	UNICOM 123.075 (CTAF) U
--------------------------------	--	-----------------------	--



NE-2, 10 JUL 2025 to 07 AUG 2025

ROBBINSVILLE
113.8 RBV
Chan 85

ROBBINSVILLE
RBV 113.8
Chan 85

STENY INT
RBV 16

One Minute Holding Pattern

DRAG STRIP

REIL Rws 6 and 24

MIRL Rwy 6-24

FAF to MAP 5.6 NM

CATEGORY	A	B	C	D
S-24	600-1	513 (600-1)	NA	
CIRCLING	620-1 533 (600-1)	640-1 553 (600-1)	NA	

ELEV 87 **TDZE 87**

Knots 60 90 120 150 180
Min:Sec 5:36 3:44 2:48 2:14 1:52

OLD BRIDGE, NEW JERSEY

Amdt 4B 29MAY14

40°20'N-74°21'W

OLD BRIDGE (3N6)
VOR RWY 24