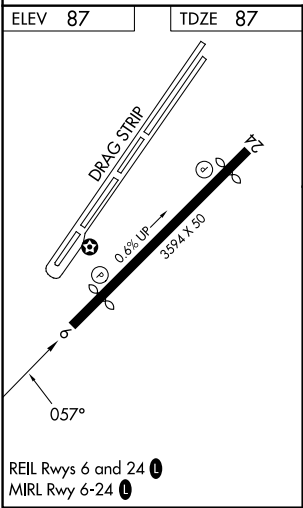
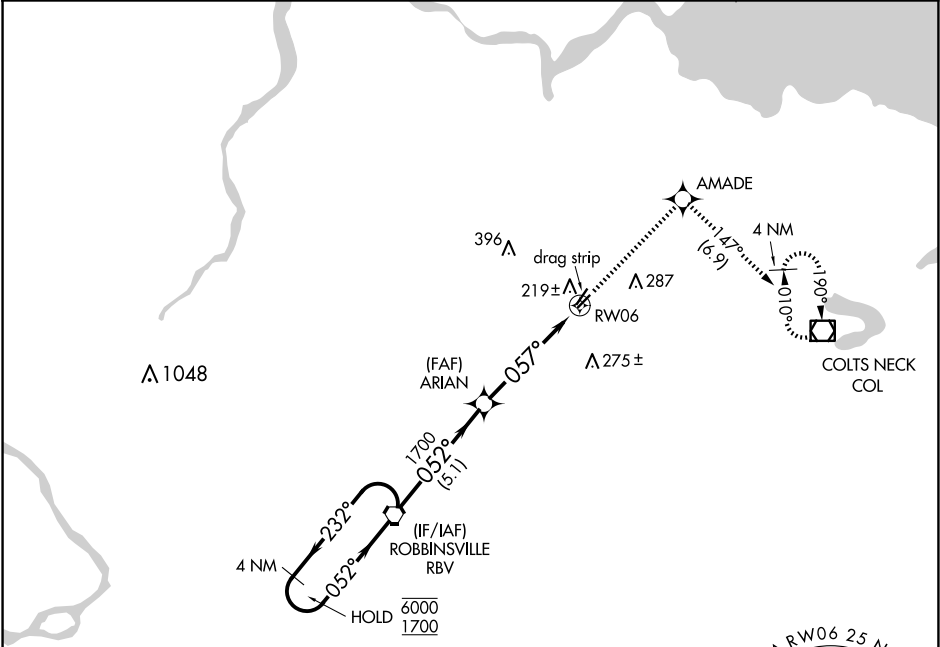


APP CRS	Rwy Idg	2994
057°	TDZE	87
	Apt Elev	87

RNAV (GPS) RWY 6
OLD BRIDGE (3N6)

RNP APCH.	Procedure NA at night. Rwy 6 helicopter visibility reduction below 1 SM NA. Use Belmar/Farmingdale altimeter setting; when not received, use Wrightstown altimeter setting and increase all MDA 20 feet.	MISSED APPROACH: Climb to 2000 direct AMADE and on track 147° to COL VOR/DME and hold.
NA		

BLM AWOS-3PT 121.625	MC GUIRE APP CON 126.475 363.8	GCO 121.725	UNICOM 123.075 (CTAF) 1
-------------------------	-----------------------------------	----------------	----------------------------



Visual Segment - Obstacles.			
4 NM Holding Pattern	2000	AMADE	COL
	↑	✧	tr 147°
			☐
RBV VORTAC			
ARIAN			
RWY 06			
5.1 NM			
4.9 NM			
CATEGORY	A	B	C D
LNAV MDA	660-1	573 (600-1)	NA

NE-2, 10 JUL 2025 to 07 AUG 2025

NE-2, 10 JUL 2025 to 07 AUG 2025