

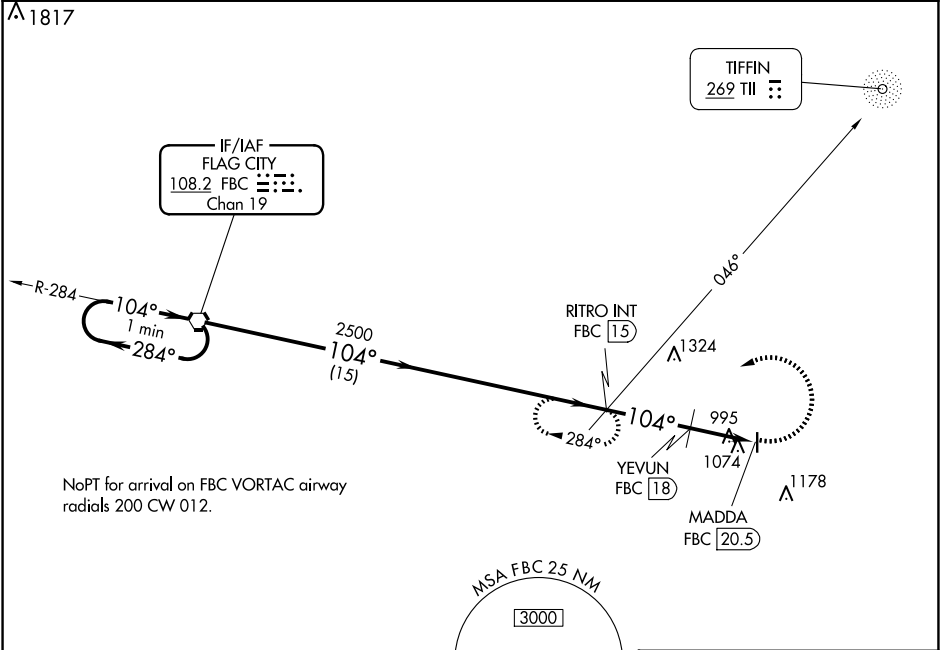
VORTAC FBC	APP CRS	Rwy Idg	N/A
<b>108.2</b>	<b>104°</b>	TDZE	N/A
Chan 19		Apt Elev	<b>830</b>

VOR-A

WYANDOT COUNTY (56D)

<div><div>Procedure NA at night. When local altimeter setting not received, use Marion altimeter setting: increase all MDAs 40 feet and visibility Cat C/D ¼ SM.</div><div>NA</div></div>	MISSED APPROACH: Climbing left turn to 2500 on FBC VORTAC R-104 to RITRO INT/15 DME and hold.
---	---

FDY ASOS	CLEVELAND APP CON ★	UNICOM
<b>132.85</b>	<b>128.35 360.65</b>	<b>123.05 (CTAF) 0</b>



ADF or DME REQUIRED

ELEV 830

81 3997 X 75 36

One Minute Holding Pattern					2500 FBC R-104 RITRO INT	
					104°	
CATEGORY	A	B	C	D	URL Rwy 18-36 0	
CIRCLING	1520-1 690 (700-1)	1520-1¼ 690 (700-1¼)	1540-2 710 (800-2)	1540-2¼ 710 (800-2¼)	FAF to MAP 5.5 NM	
YEVUN FIX MINIMUMS (DME REQUIRED)						
CIRCLING	1420-1 590 (600-1)	1440-1 610 (700-1)	1540-2 710 (800-2)	1540-2¼ 710 (800-2¼)		
					Knots	60 90 120 150 180
					Min:Sec	5:30 3:40 2:45 2:12 1:50