

WAAS CH <b>72827</b> <b>W09A</b>	APP CRS <b>088°</b>	Rwy Ldg TDZE Apt Elev	<b>4218</b> <b>1021</b> <b>1021</b>
--	------------------------	-----------------------------	---

RNAV (GPS) RWY 9  
UNION COUNTY (MRT)

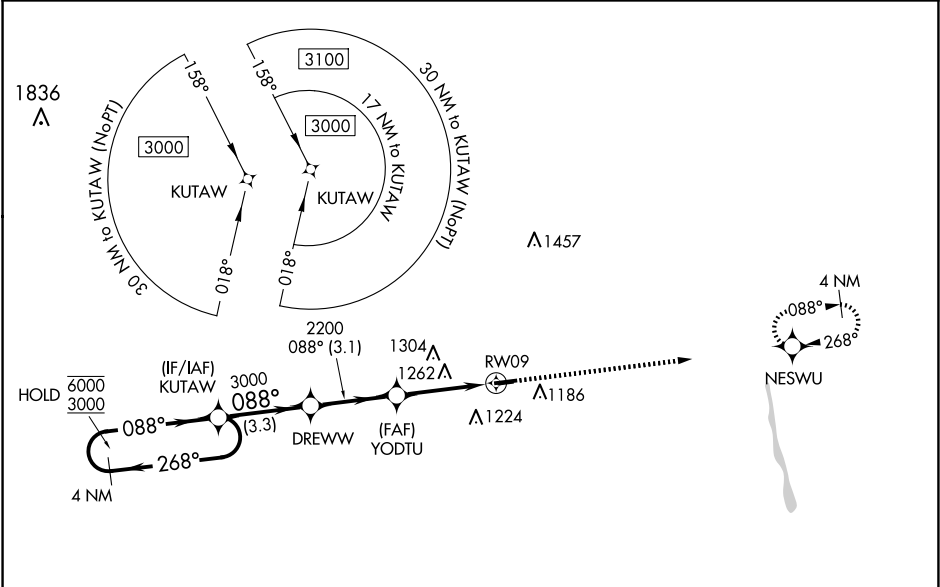
RNP APCH - GPS.

▼  
▲

When Circling to Rwy 27 at night, operational VGSi required, remain on or above VGSi glidepath until threshold. For uncompensated Baro-VNAV systems, LNAV/VNAV NA below -17°C or above 54°C. Circling NA to Rwy 8 and 26.

MISSED APPROACH: Climb to 3000 direct NESWU and hold.

AWOS-3 <b>119.275</b>	COLUMBUS APP CON <b>125.95 317.775</b>	UNICOM <b>122.8 (CTAF)</b>
--------------------------	---	-------------------------------



ELEV 1021	TDZE 1021
-----------	-----------

4 NM Holding Pattern

VGSi and RNAV glidepath not coincident (VGSi Angle 3.00/TCH 25).

3000

NESWU

KUTAW

DREWW

YODTU

6000  
3000

268°  
088°

088°  
088°

3000

088°

2200

1.5 NM to RWY09

RWY09

GP 3.00°  
TCH 40

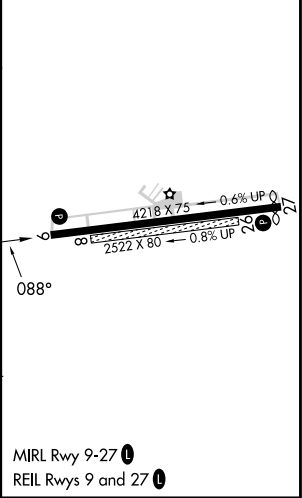
3.3 NM

3.1 NM

2.1 NM

1.5 NM

CATEGORY	A	B	C	D
LPV DA	1285-7⁄8 264 (300-7⁄8)			
LNAV/VNAV DA	1432-1 1⁄8 411 (500-1 1⁄8)			
LNAV MDA	1520-1 499 (500-1)	1520-1 3⁄8 499 (500-1 3⁄8)		
CIRCLING	1520-1 499 (500-1)	1540-1 519 (600-1)	1620-1 1⁄2 599 (600-1 1⁄2)	1620-2 599 (600-2)



EC-2, 10 JUL 2025 to 07 AUG 2025

EC-2, 10 JUL 2025 to 07 AUG 2025