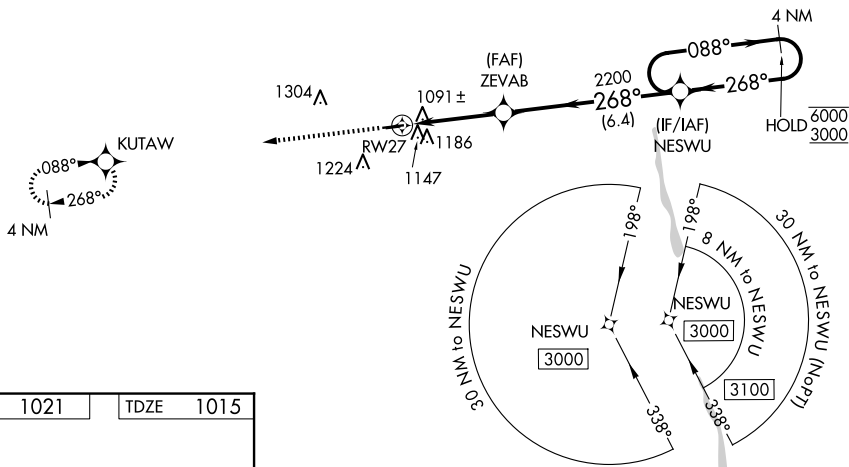


25163

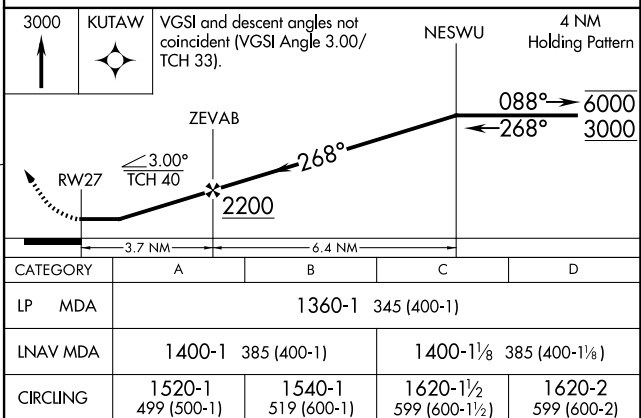
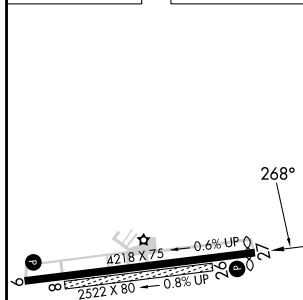
RNAV (GPS) RWY 27
UNION COUNTY (MRT)

MISSED APPROACH: Climb to 3000 direct KUTAW and hold.

AWOS-3 119.275	COLUMBUS APP CON 125.95 317.775	UNICOM 122.8 (CTAF) ①
--------------------------	---	---------------------------------



ELEV	1021		TDZE	1015
------	------	--	------	------

UNION COUNTY(MRT)
RNAV (GPS) RWY 27

EC-2, 10 JUL 2025 to 07 AUG 2025