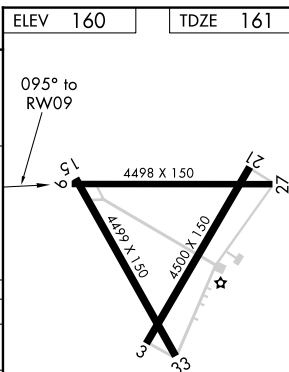
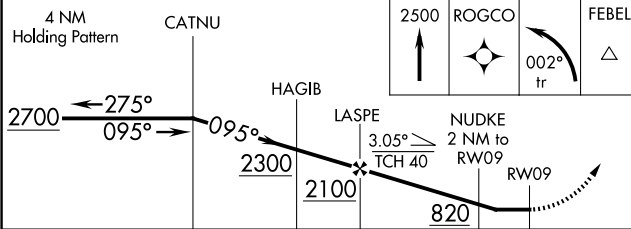
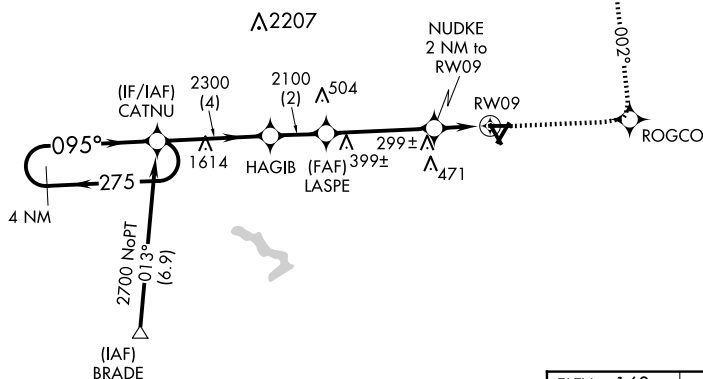
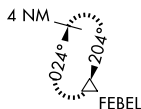
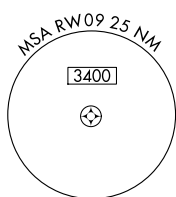


RNAV (GPS) RWY 9
WILSON INDUSTRIAL AIR CENTER (W03)

MISSED APPROACH: Climb to 2500 direct ROGCO then left turn via 002° track to FEBEL and hold.

UNICOM
123.0 (CTAF) **L**



CATEGORY	A		B		C		D	
RNAV MDA	560-1 399 (400-1)					560-1½ 399 (400-1½)		
CIRCLING	660-1 500 (500-1)			780-1¾ 620 (700-1¾)		780-2 620 (700-2)		
ROCKY MOUNT ALTIMETER SETTING MINIMUMS								
RNAV MDA	580-1 419 (500-1)			580-1½ 419 (500-1½)				
CIRCLING	680-1 520 (600-1)			800-1¾ 640 (700-1¾)		800-2 640 (700-2)		

REIL Rwy 3 and 21 **L**
MIRL Rwy 3-21 **L**