

APP CRS	Rwy Idg	<b>4499</b>
<b>339°</b>	TDZE	<b>157</b>
	Apt Elev	<b>160</b>

## RNAV (GPS) RWY 33

WILSON INDUSTRIAL AIR CENTER (W03)

RNP APCH.

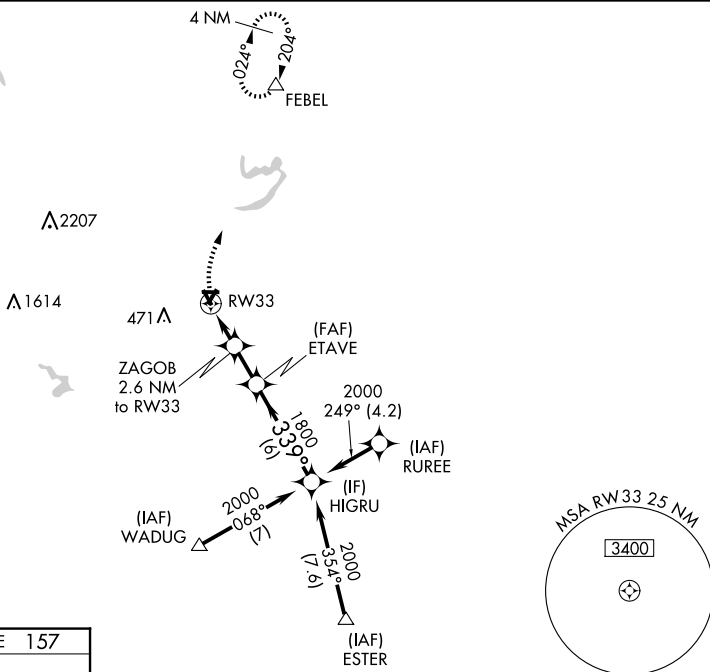
**T** Obtain local altimeter setting on CTA; when not received, use Rocky Mount altimeter setting. Straight-in Rwy 33 NA at night, Circling Rwy 9, 15, 27, 33 NA at night. Rwy 33 helicopter visibility reduction below 1 SM NA.

**MISSED APPROACH:** Climbing right turn to 2500 direct FEBEL WP and hold.

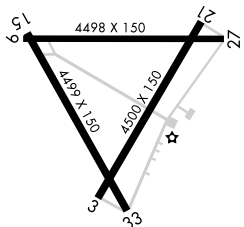
WASHINGTON CENTER

**123.85 279.65**

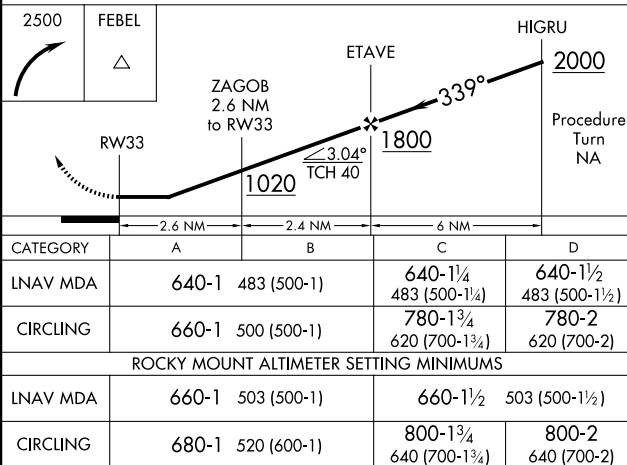
UN|COM

123.0 (CTAF) **L**

ELEV	160		TDZE	157
------	-----	--	------	-----



REF: Rwyys 3 and 21 0

MIRL Rwy 3-21 **L**

CATEGORY	A	B	C	D
LNAV MDA	640-1	483 (500-1)	640-1 $\frac{1}{4}$ 483 (500-1 $\frac{1}{4}$ )	640-1 $\frac{1}{2}$ 483 (500-1 $\frac{1}{2}$ )
CIRCLING	660-1	500 (500-1)	780-1 $\frac{3}{4}$ 620 (700-1 $\frac{3}{4}$ )	780-2 620 (700-2)
ROCKY MOUNT ALTIMETER SETTING MINIMUMS				
LNAV MDA	660-1	503 (500-1)	660-1 $\frac{1}{2}$	503 (500-1 $\frac{1}{2}$ )
CIRCLING	680-1	520 (600-1)	800-1 $\frac{3}{4}$ 640 (700-1 $\frac{3}{4}$ )	800-2 640 (700-2)