

WAAS	APP CRS	Rwy Idg	4500
CH 69339	038°	TDZE	156
W03A		Apt Elev	160

RNAV (GPS) RWY 3

WILSON INDUSTRIAL AIR CENTER (W03)

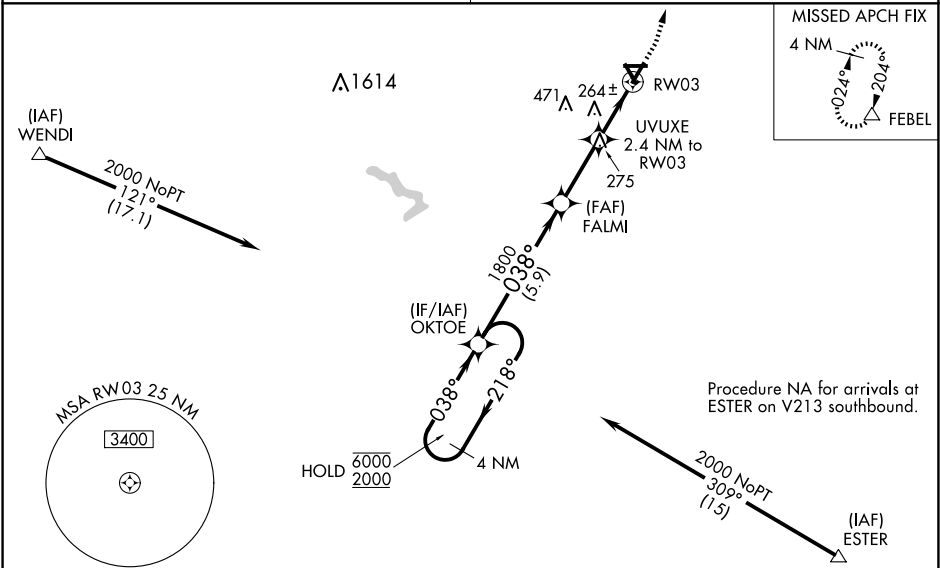
RNP APCH.

Baro-VNAV NA when using Rocky Mount altimeter setting. For uncompensated Baro-VNAV systems, LNAV/VNAV NA below -15°C or above 54°C.

Obtain local altimeter setting on CTAF; when not received, use Rocky Mount altimeter setting: increase LPV DA to 421 and visibility all Cats ½ SM; increase LNAV/VNAV DA to 439; increase all MDA 20 feet and LNAV visibility Cats C and D ½ SM. Circling Rwy 9, 15, 27, 33 NA at night.

MISSED APPROACH: Climb to 700, then climbing left turn to 2500 direct FEBEL and hold.

WASHINGTON CENTER 123.85 279.65	UNICOM 123.0 (CTAF) 0
------------------------------------	--------------------------



ELEV 160

TDZE 156

4 NM Holding Pattern

OKTOE

FALMI

UVUXE 2.4 NM to RWY 3

RWY 3

GP 3.00° TCH 40

6000 ← 218°

2000 → 038°

1800

5.9 NM

2.6 NM

2.4 NM

700

2500

FEBEL

*LNAV only.

*960

CATEGORY	A	B	C	D
LPV DA		406-¾	250 (300-¾)	
LNAV/VNAV DA		424-⅞	268 (300-⅞)	
LNAV MDA	520-1	364 (400-1)	520-1¾ 364 (400-1¾)	520-2 364 (400-2)
CIRCLING	660-1	500 (500-1)	780-1¾ 620 (700-1¾)	780-2 620 (700-2)

REL Rws 3 and 21 0

MIRL Rwy 3-21 0