

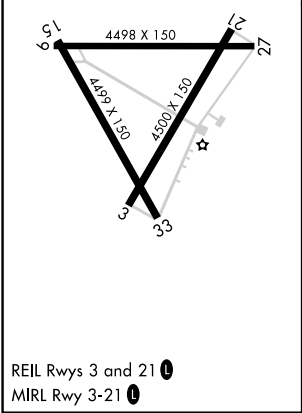
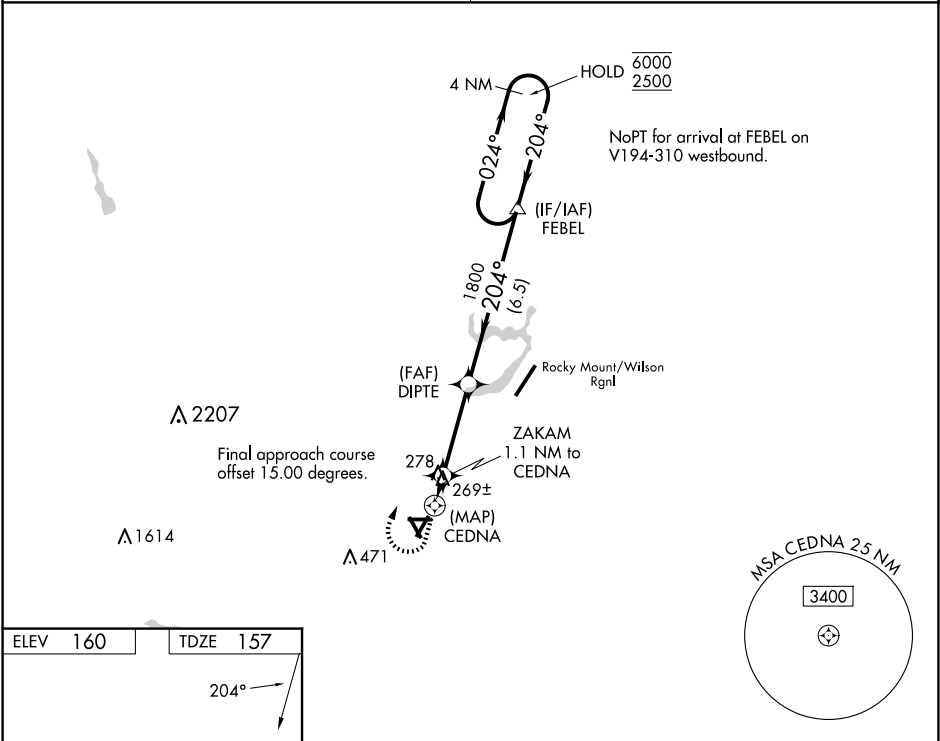
WAAS CH 72739 W21A	APP CRS 204°	Rwy Idg TDZE 157 Apt Elev 160
--	------------------------	---

RNAV (GPS) RWY 21

WILSON INDUSTRIAL AIR CENTER (W03)

RNP APCH.	<div><div><div>▼</div><div>NA</div></div><div>Circling Rwy 9, 15, 27, 33 NA at night. Obtain local altimeter setting on CTAF; when not received, use Rocky Mount altimeter setting and increase all MDA 20 feet; increase LP Cats C and D visibility ½ SM. Rwy 21 helicopter visibility reduction below ¾ SM NA.</div></div>	<div>MISSED APPROACH: Climb to 1000, then climbing right turn to 2500 direct FEBEL and hold.</div>
-----------	--	--

WASHINGTON CENTER 123.85 279.65	UNICOM 123.0 (CTAF) 0
---	---------------------------------



1000 ↑		2500 ↗		FEBEL △		4 NM Holding Pattern			
ZAKAM 1.1 NM to CEDNA				DIPTÉ		FEBEL			
CEDNA				3.04° TCH 40		1800			
700				204°		024° → 6000 ← 204° 2500			
0.5 1.1 NM				3.4 NM		6.5 NM			
CATEGORY		A		B		C		D	
LP MDA		520-1 363 (400-1)							
LNAV MDA		540-1 383 (400-1)				540-1½ 383 (400-1½)			
CIRCLING		660-1 500 (500-1)				780-1¾ 620 (700-1¾)		780-2 620 (700-2)	