

CARO, MICHIGAN

AL-6375 (FAA)

25107

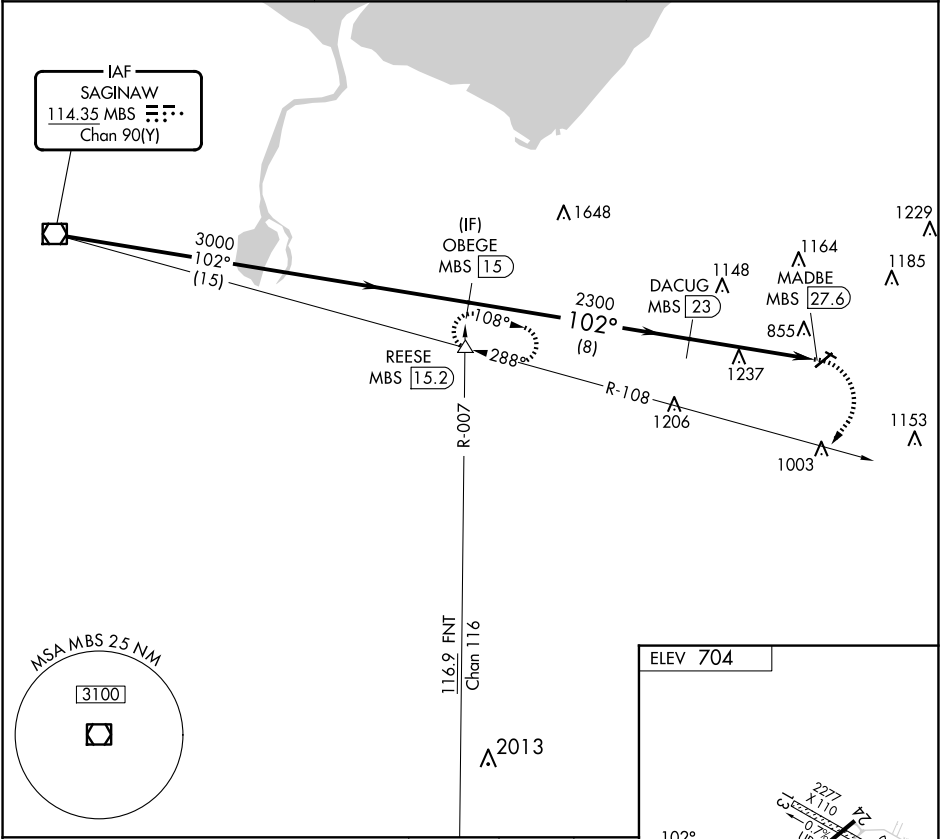
VOR/DME MBS	APP CRS	Rwy Idg	N/A
114.35	102°	TDZE	N/A
Chan 90 (Y)		Apt Elev	704

VOR-A

TUSCOLA AREA (CFS)

DME required.	MISSED APPROACH: Climbing right turn to 3000 on heading 220° and on MBS VOR/DME R-108 to REESE INT/15.2 DME and hold.
<div><div></div><div></div></div> Circling NA to Rws 13 and 31. Procedure NA at night.	

AWOS-3 119.275	GREAT LAKES APP CON ★ 120.95 235.625	UNICOM 123.0 (CTAF) 0
-------------------	---	--------------------------



	MBS VOR/DME	OBEGE MBS (15)	3000 hdg 220°	REESE MBS R-108
	3000	3000	2300	MADBE MBS (27.6)
	15 NM	8 NM	4.6 NM	
CATEGORY	A	B	C	D
CIRCLING	1540-1¼	836 (900-1¼)	1600-2¾ 896 (900-2¾)	NA

CARO, MICHIGAN  
Amdt 7A 17APR25

TUSCOLA AREA (CFS)  
VOR-A

43°28'N-83°27'W

EC-1, 10 JUL 2025 to 07 AUG 2025

EC-1, 10 JUL 2025 to 07 AUG 2025