

CARO, MICHIGAN

AL-6375 (FAA)

25163

WAAS CH <b>56441</b> <b>W06A</b>	APP CRS <b>058°</b>	Rwy Ldg TDZE Apt Elev	<b>4302</b> <b>689</b> <b>704</b>
--	------------------------	-----------------------------	---

# RNAV (GPS) RWY 6

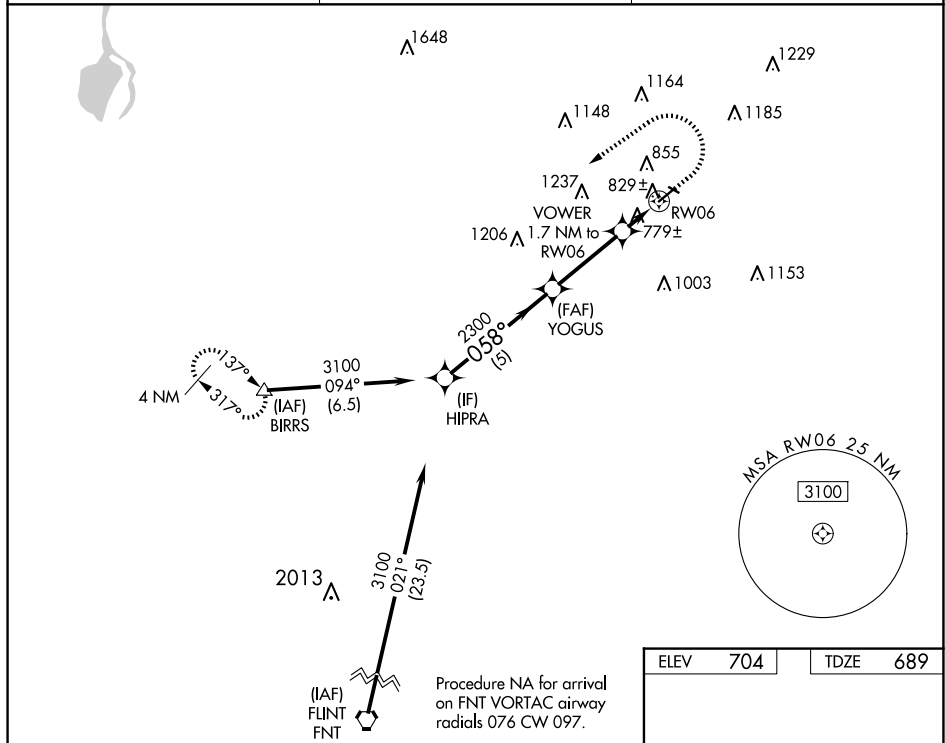
## TUSCOLA AREA (CFS)

RNP APCH - GPS.

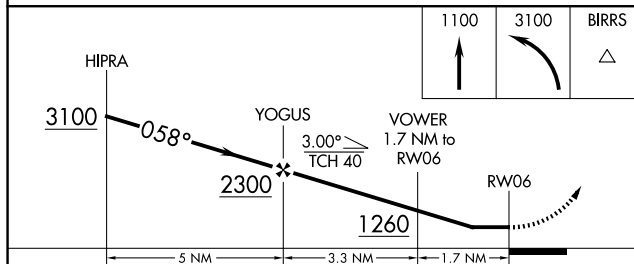
**T** Circling NA to Rwy 13 and 31. Rwy 6 helicopter visibility  
**A** reduction below 1 SM NA. Procedure NA at night.


**MISSED APPROACH:** Climb to 1100 then climbing left turn to 3100 direct BIRRS and hold.

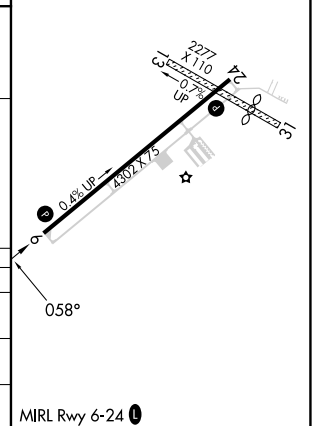
AWOS-3 <b>119.275</b>	GREAT LAKES APP CON★ <b>120.95 235.625</b>	UNICOM <b>123.0 (CTAF) 0</b>
--------------------------	---	---------------------------------



ELEV	704	TDZE	689
------	-----	------	-----



CATEGORY	A	B	C	D
LP MDA	1040-1 351 (400-1)			NA
LNAV MDA	1080-1	391 (400-1)	1080-1 $\frac{1}{8}$ 391 (400-1 $\frac{1}{8}$ )	NA
 CIRCLING	1200-1	496 (500-1)	1600-2 $\frac{3}{4}$ 896 (900-2 $\frac{3}{4}$ )	NA

CARO, MICHIGAN  
Amdt 2C 12JUN25

43°28'N-83°27'W

TUSCOLA AREA (CFS)  
RNAV (GPS) RWY 6

EC-1, 10 JUL 2025 to 07 AUG 2025