

VORTAC ODI

117.9

Chan 126

APP CRS

184°

Rwy Idg

TDZE

Apt Elev

N/A

N/A

1179

VOR-A

HOUSTON COUNTY (CHU)

DME required.

▼

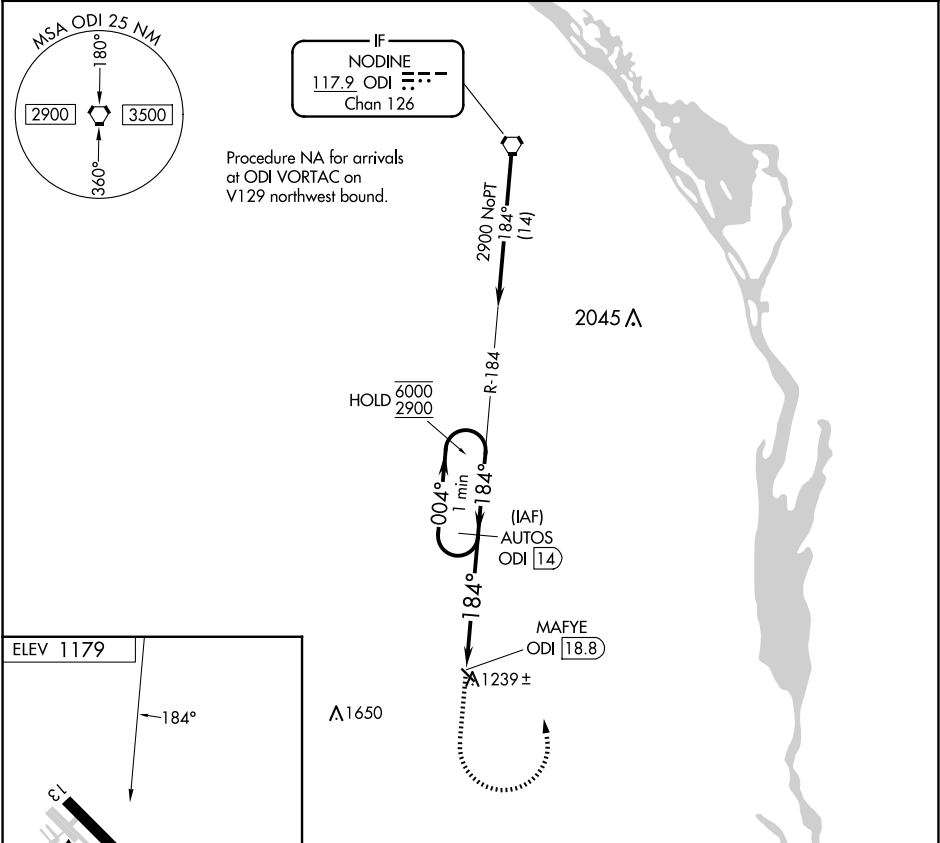
▲

NA

Use La Crosse Rgnl altimeter setting.  
Procedure NA at night.

MISSED APPROACH: Climb to 2900 then left turn on ODI  
VORTAC R-184 to AUTOS/ODI 14 DME and hold.

LSE ASOS 124.95	MINNEAPOLIS CENTER 128.6 363.0	CTAF 122.9 0
--------------------	-----------------------------------	-----------------



2900	AUTOS ODI 14	AUTOS ODI 14	One Minute Holding Pattern
MAFYE ODI 18.8	184°	004°	6000 2900
4.8 NM			
CATEGORY	A	B	C D
CIRCLING	1820-1	641 (700-1)	NA

NC-1, 10 JUL 2025 to 07 AUG 2025

NC-1, 10 JUL 2025 to 07 AUG 2025