

APP CRS
184°

Rwy Idg
TDZE
Apt Elev

N/A
N/A
1179

RNAV (GPS)-B
HOUSTON COUNTY (CHU)

RNP APCH - GPS.

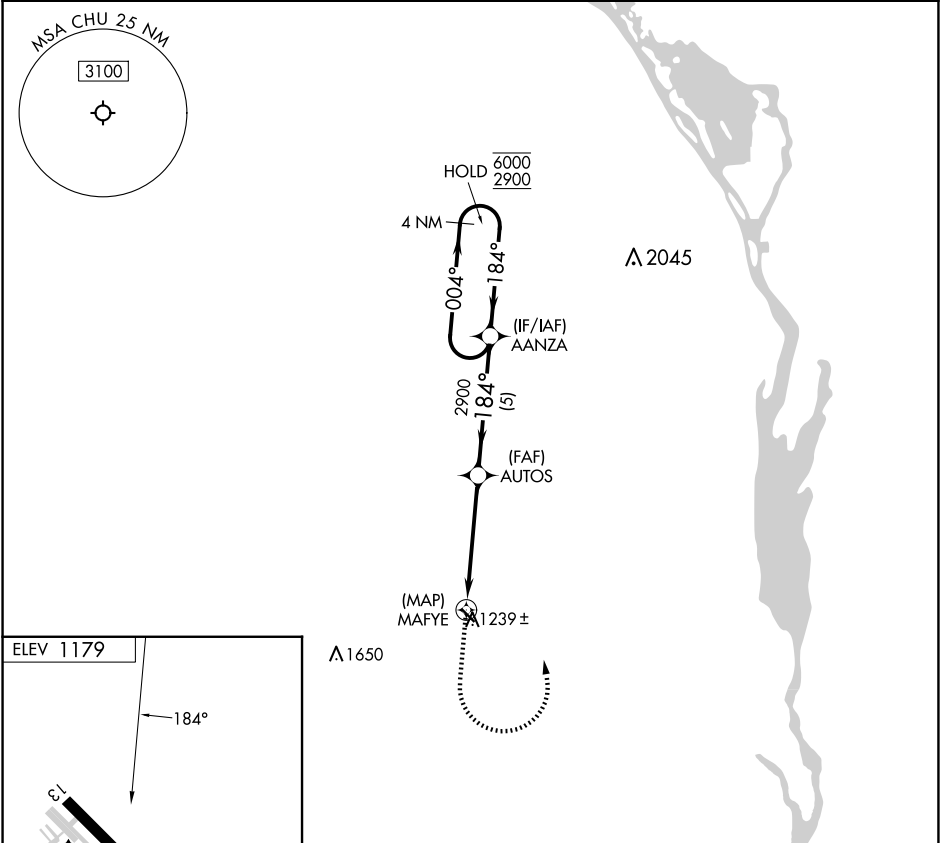
▼

NA

Procedure NA at night. Rwy 13 and 31 helicopter visibility reduction below 1 SM NA. Use La Crosse Rgnl altimeter setting.

MISSED APPROACH: Climb to 2900 then left turn direct AANZA and hold.

LSE ASOS 124.95	MINNEAPOLIS CENTER 128.6 363.0	CTAF 122.9 0
---------------------------	--	------------------------



ELEV 1179

184°

31

13

3499 X 77

2900	AANZA	AUTOS	AANZA	4 NM Holding Pattern
MAFYE	2900	184°	004°	6000 2900
4.8 NM		5 NM		
CATEGORY	A	B	C	D
CIRCLING	1820-1 641 (700-1)		NA	

NC-1, 10 JUL 2025 to 07 AUG 2025

NC-1, 10 JUL 2025 to 07 AUG 2025