

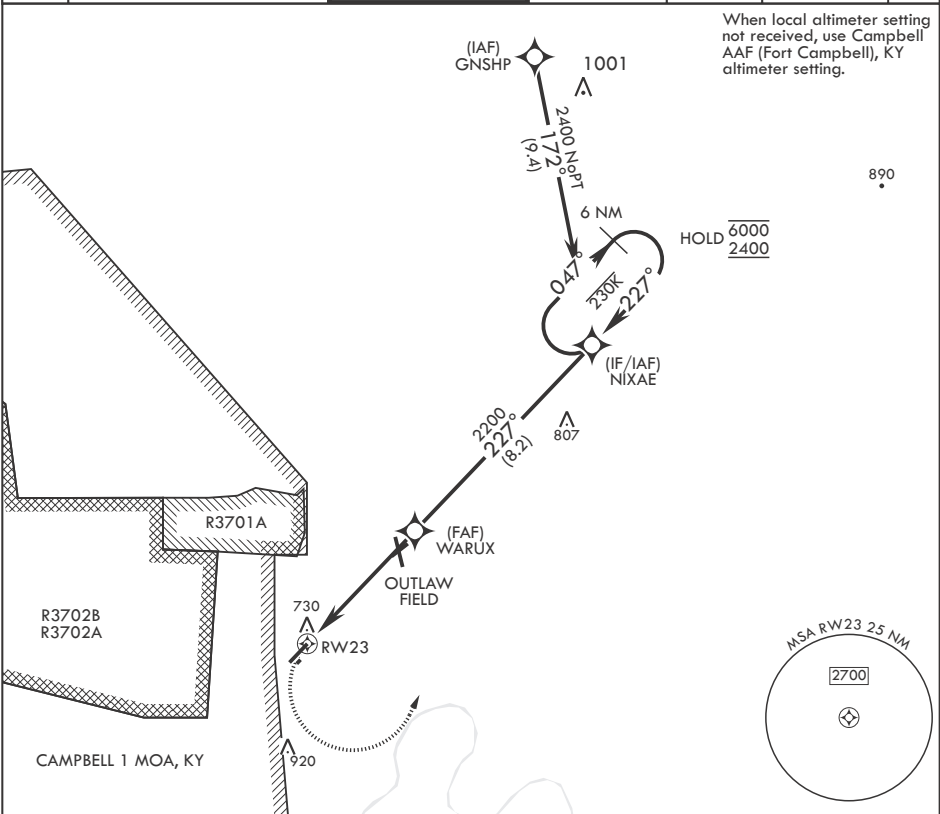
APCH CRS	Rwy Idg	5000
227°	TDZE	587
	Arpt Elev	596

- (USA)

SABRE AAF (FORT CAMPBELL) (KEOD)

RNP APCH-GPS	MISSED APPROACH: Climbing left turn to 2400 direct NIXAE and hold.
RADAR required	
* Circling not authorized to Rwy 5R/23L.	

ATIS	CAMPBELL APP CON/DEP CON	TOWER*	GND CON	CLNC DEL	EAGLE RADIO	ASR
306.5	134.35 307.025	124.675 (CTAF) 290.45	142.975 267.3	237.6	139.9 285.7	ASR



2400 NIXAE

† VDP NA when using Campbell AAF (Fort Campbell) altimeter setting.

6 NM Holding Pattern

NIXAE 047° → 6000 2400

WARUX 227°

2200

† 1.3 NM to RW23

≤ 3.00° TCH 45

5 NM

ELEV 596

TDZE 587

5000 x 100

5000 x 50

0.8% UP

0.4% UP

227°

HIRL Rwy 5-23

CATEGORY	A	B	C	D
LNAV MDA	1060-1 473 (500-1)	1060-1 473 (500-1)	1060-1 473 (500-1)	1060-1 473 (500-1)
CIRCLING*	1160-1 565 (600-1)	1240-1 645 (700-1)	1300-2 705 (800-2)	1300-2 705 (800-2)