

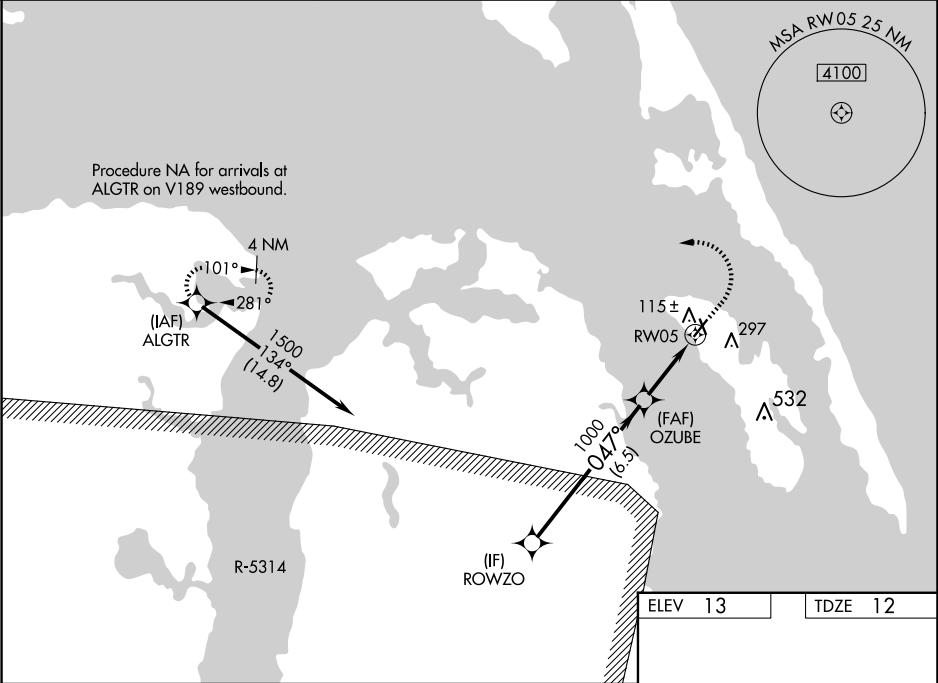
WAAS CH <b>72626</b> <b>W05A</b>	APP CRS <b>047°</b>	Rwy Idg TDZE <b>12</b> Apt Elev <b>13</b>	<b>4001</b>
----------------------------------------	------------------------	-------------------------------------------------	-------------

RNAV (GPS) RWY 5

DARE COUNTY RGNL (MQI)

RNP APCH - GPS.		MISSED APPROACH: Climb to 500 then climbing left turn to 3000 direct ALGTR and hold.
<div><div><div></div><div></div></div></div>	Circling Rwy 17, 23, 35 NA at night. For uncompensated Baro-VNAV systems, LNAV/VNAV NA below -5°C or above 54°C.	

AWOS-3 <b>128.275</b>	CHERRY POINT APP CON <b>124.725 350.35</b>	UNICOM <b>122.8 (CTAF) 0</b>
--------------------------	-----------------------------------------------	---------------------------------



VGSi and RNAV glidepath not coincident (VGSi Angle 3.00/TCH 30).				
ROWZO				
1500				
GP 3.00° TCH 45				
047°				
1000				
OZUBE				
1000				
1.3 NM to RW05				
RW05				
6.5 NM 1.7 NM 1.3 NM				
CATEGORY	A	B	C	D
LPV DA	262-¾	250 (300-¾)		NA
LNAV/VNAV DA	347-1	335 (400-1)		NA
LNAV MDA	460-1	448 (500-1)	460-1⅜ 448 (500-1⅜)	NA
CIRCLING	600-1	587 (600-1)	600-1½ 587 (600-1½)	NA

