

APP CRS 227°	Rwy Idg 4005 TDZE 12 Apt Elev 13
------------------------	---

RNAV (GPS) RWY 23

DARE COUNTY RGNL (MQI)

	RNP APCH - GPS.
--	-----------------



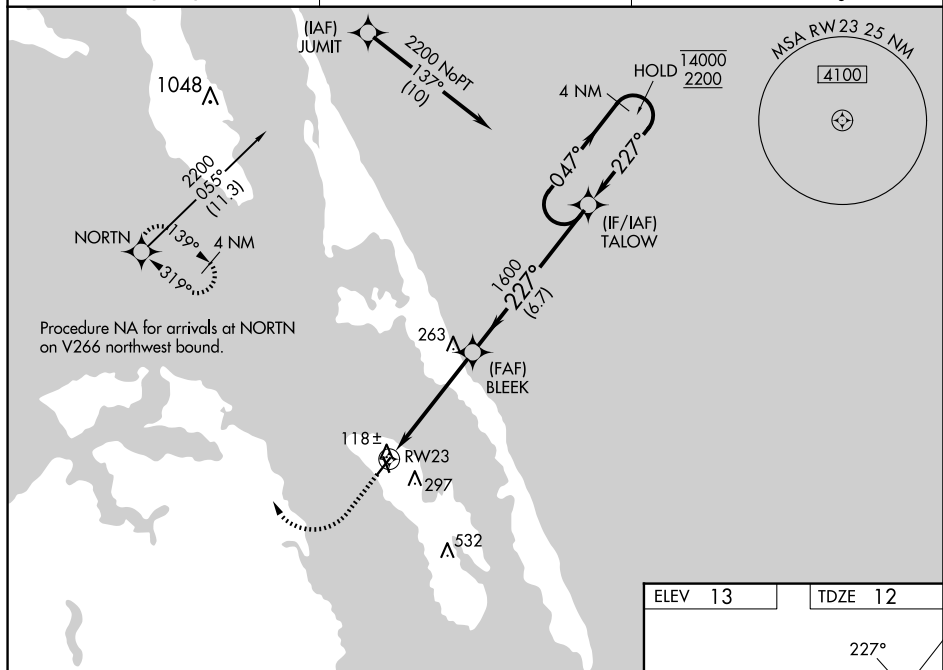
Circling Rwy 17, 35 NA at night. Rwy 23 helicopter visibility reduction below 1 SM NA. Straight-in/Circling Rwy 23 NA at night.




MISSED APPROACH: Climb to 600 then climbing right turn to 4000 direct NORTN and hold, continue climb-in-hold to 4000.

AWOS-3
128.275

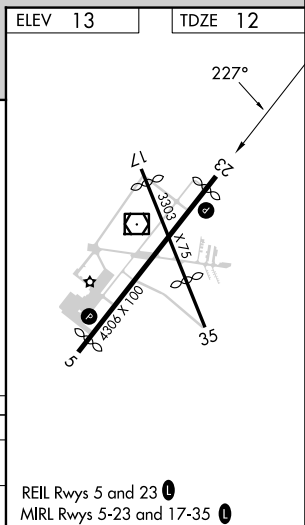
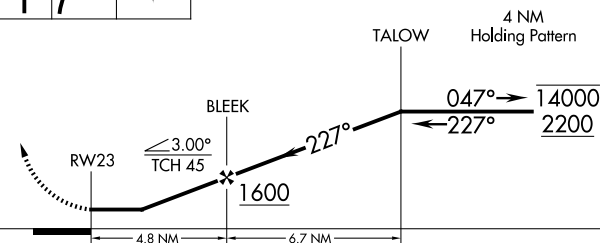
CHERRY POINT APP CON
124.725 350.35

UNICOM
122.8(CTAF) **L**



600	4000	NORTN
		

VGSI and descent angles not coincident
(VGSI Angle 4.00/TCH 32).



MANTEO, NORTH CAROLINA
Orig-C 20APR23

35°55'N-75°42'W

DARE COUNTY RGNL (MQI)
RNAV (GPS) RWY 23

SE-2, 10 JUL 2025 to 07 AUG 2025