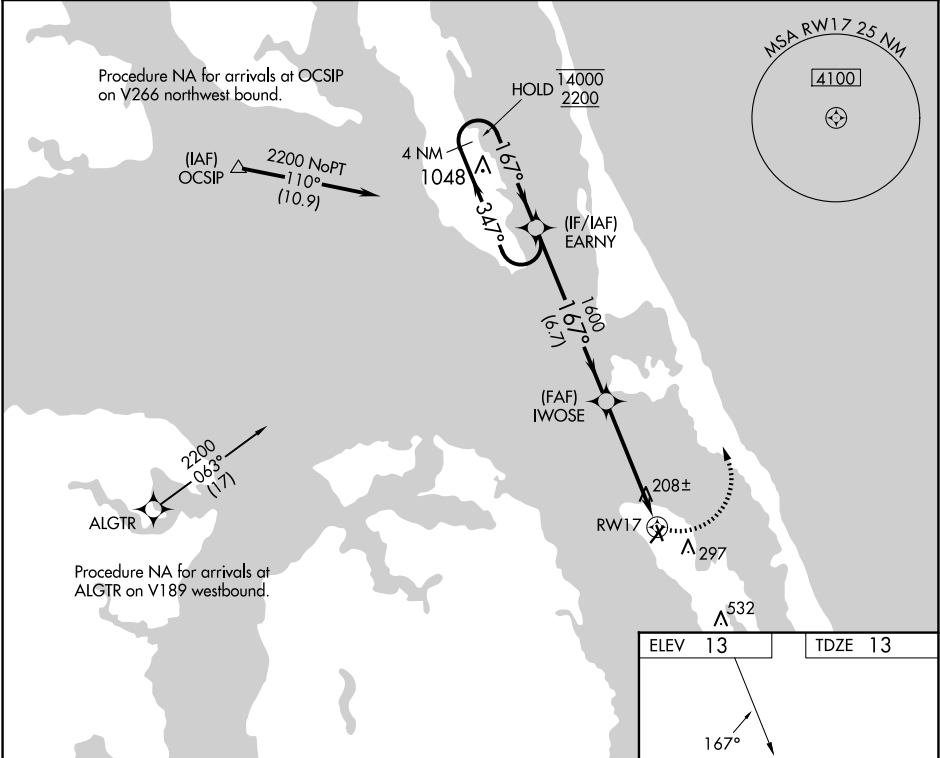


APP CRS <b>167°</b>	Rwy Idg	<b>3013</b>
	TDZE	<b>13</b>
	Apt Elev	<b>13</b>

RNAV (GPS) RWY 17

DARE COUNTY RGNL (MQI)

RNP APCH - GPS.		MISSED APPROACH: Climbing left turn to 2200 direct EARNY and hold.
<div><div><div></div><div></div></div></div> <div>Circling Rwy 23, 35 NA at night. Rwy 17 helicopter visibility reduction below 1 SM NA. Straight-in and Circling Rwy 17 NA at night.</div>		
AWOS-3 128.275	CHERRY POINT APP CON 124.725 350.35	UNICOM 122.8(CTAF) 0



Visual Segment - Obstacles.

4 NM Holding Pattern

EARNY

IWOSE

RWY17

14000 2200 347° 167° 167° 1600 6.7 NM 4.8 NM

2200

EARNY

CATEGORY	A	B	C	D
LNAV MDA	460-1	447 (500-1)	460-1 <sup>3</sup> / <sub>8</sub> 447 (500-1 <sup>3</sup> / <sub>8</sub> )	NA
<div>CIRCLING</div>	600-1	587 (600-1)	600-1 <sup>1</sup> / <sub>2</sub> 587 (600-1 <sup>1</sup> / <sub>2</sub> )	NA

ELEV 13

TDZE 13

167°

REIL Rwy 5 and 23 0

MIRL Rwy 5-23 and 17-35 0