

WAAS CH 45837 W14A	APP CRS 143°	Rwy Idg TDZE 1155 Apt Elev 1157
--	------------------------	---

RNAV (GPS) RWY 14

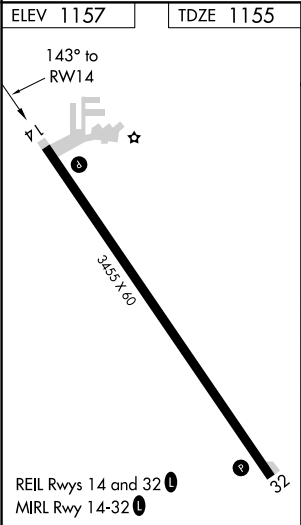
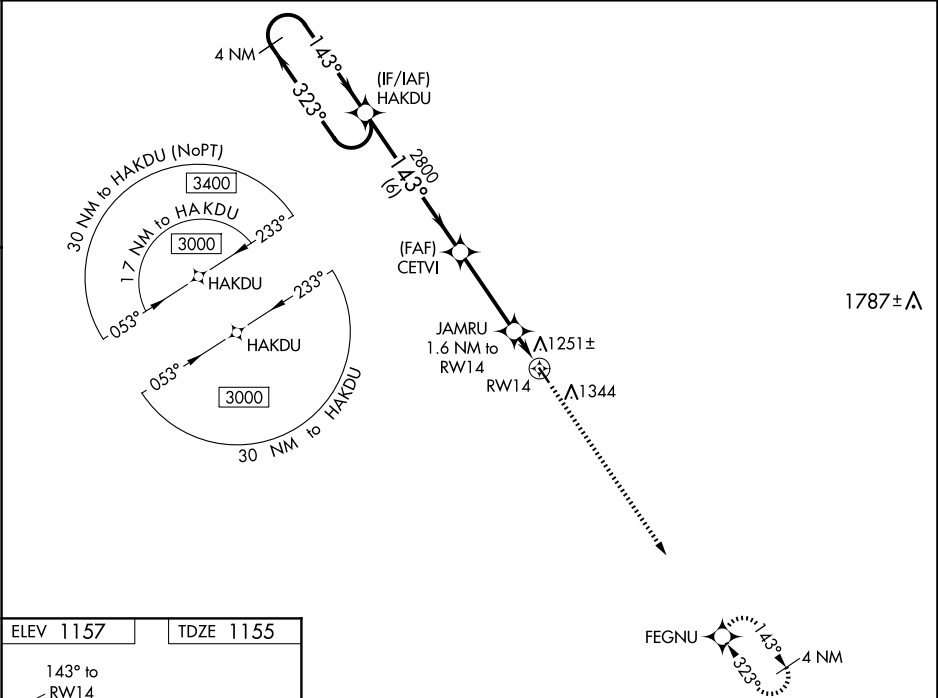
CLARION MUNI (CAV)

⚠

For uncompensated Baro-VNAV systems, LNAV/VNAV NA below -17°C (2°F) or above 54°C (130°F). DME/DME RNP-0.3 NA. When local altimeter setting not received, use Fort Dodge altimeter setting and increase all DA 52 feet, all MDA 60 feet; increase LPV and LNAV/VNAV all Cats visibility 1/8 mile. Baro-VNAV and VDP NA when using Fort Dodge altimeter setting. Helicopter visibility reduction below 3/4 SM NA.

MISSED APPROACH: Climb to 3000 direct FEGNU and hold.

AWOS-3 126.575	MINNEAPOLIS CENTER 134.0 288.3	UNICOM 122.8 (CTAF) 0
--------------------------	--	---------------------------------



VGSI and RNAV glidepath not coincident (VGSI Angle 3.00/TCH 40).				3000	FEGNU
4 NM Holding Pattern				3000	
GP 3.00° TCH 40				2800	
6 NM				3.5 NM	
CETVI				0.6	
JAMRU 1.6 NM to RW14				1 NM	
*1700					
*LNAV only					
RW14					
CATEGORY	A	B	C	D	
LPV DA	1405-1	250 (300-1)		NA	
LNAV/VNAV DA	1415-1	260 (300-1)		NA	
LNAV MDA	1520-1	365 (400-1)		NA	
CIRCLING	1680-1	523 (600-1)		NA	