

APP CRS 164°	Rwy Idg TDZE Apt Elev	N/A N/A 22	RNAV (GPS)-B UNALASKA (DUT) (PADU)
------------------------	-----------------------------	---------------------------------------	--

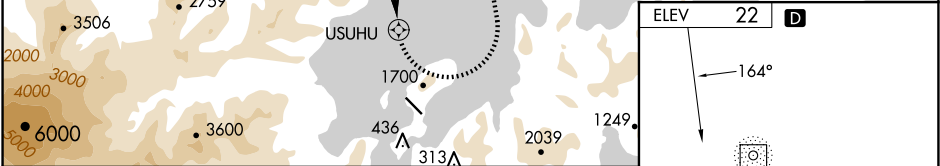
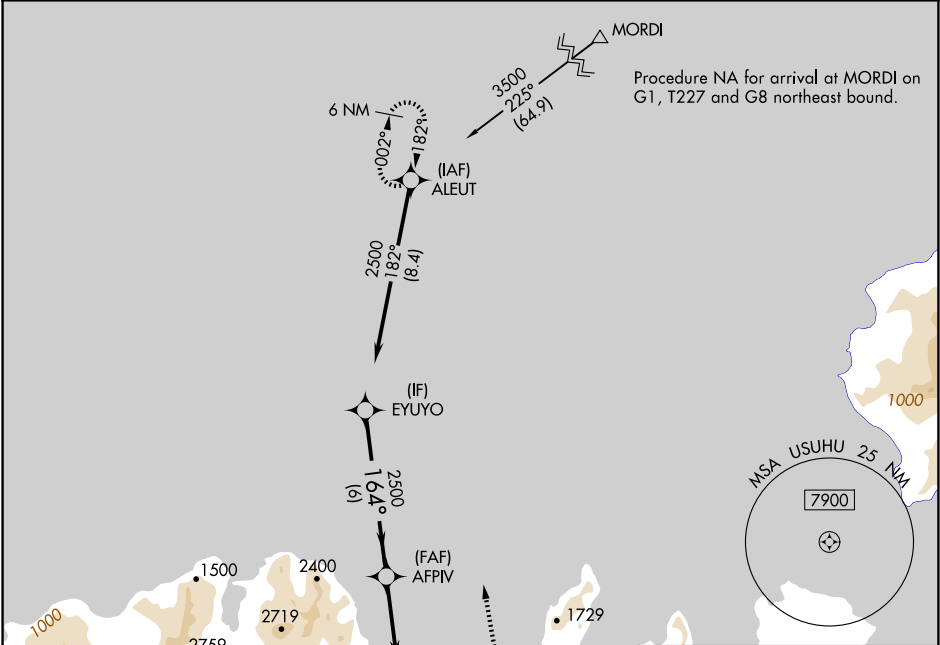
▼

▲

Circling NA northeast of Rwy 13-31. DME/DME RNP-0.3 NA.
Procedure NA at night. When local altimeter setting not received, use Akutan altimeter setting and increase all MDAs 100 feet.

MISSED APPROACH: Climbing left turn to 3600 direct ALEUT and hold.

AWOS-3P 125.8	ANCHORAGE CENTER 121.4	CTAF 122.6 0 *
-------------------------	----------------------------------	--------------------------



EYUYO		AFFIV		USUHU	
2500		2500		1700	
164°		164°		164°	
6 NM		3.5 NM		2.5	
CATEGORY	A	B	C	D	
● CIRCLING	2000-3	1978 (2000-3)	2320-3 2298 (2300-3)	2500-3 2478 (2500-3)	MIRL Rwy 13-31 REIL Rws 13 and 31