

APP CRS
263°

Rwy Idg
TDZE
Apt Elev
742

N/A
N/A
742

RNAV (GPS)-A
RICHLAND (93C)

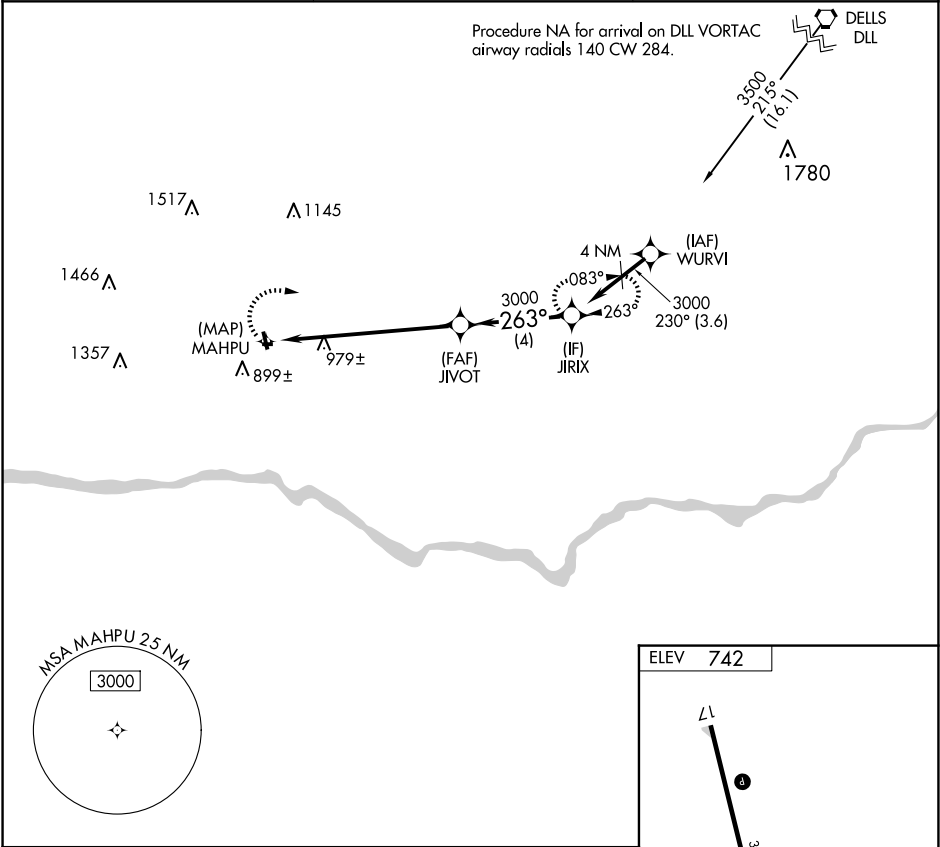
RNP APCH.

NA

Circling NA to Rwys 9 and 27. Procedure NA at night.
Use Lone Rock altimeter setting.

MISSED APPROACH: Climbing right turn to 3000 direct JIRIX and hold.

LNR ASOS 119.425	CHICAGO CENTER 133.3 257.925	CTAF 122.9 0
---------------------	---------------------------------	-----------------



3000

JIRIX

MAHPU

JIVOT

JIRIX

3000

263°

3000

7 NM

4 NM

CATEGORY	A	B	C	D
CIRCLING	1680-1¼ 938 (1000-1¼)	1700-1½ 958 (1000-1½)	NA	

ELEV 742

3000 X 60

0.7% UP

1500 X 100

0.6% UP

35

27

263°

MIRL Rwy 17-35

REIL Rwys 17 and 35