

APP CRS 067°	Rwy Idg	3002
	TDZE	15
	Apt Elev	17

RNAV (GPS) RWY 7

BILLY MITCHELL (HSE)

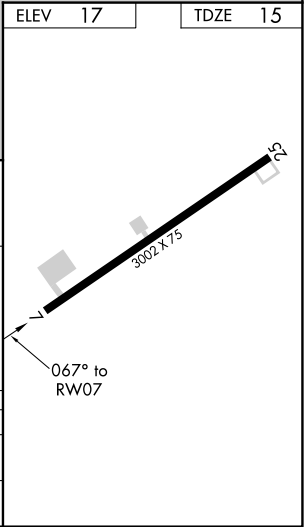
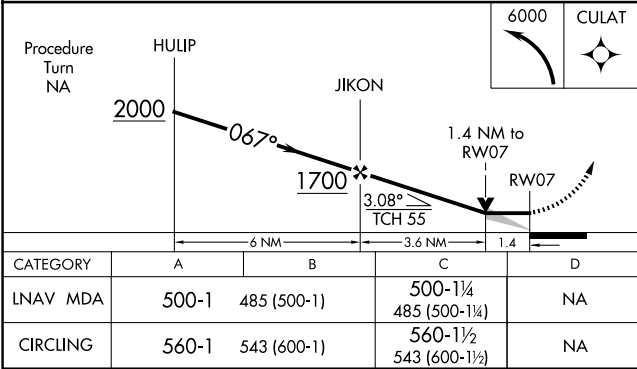
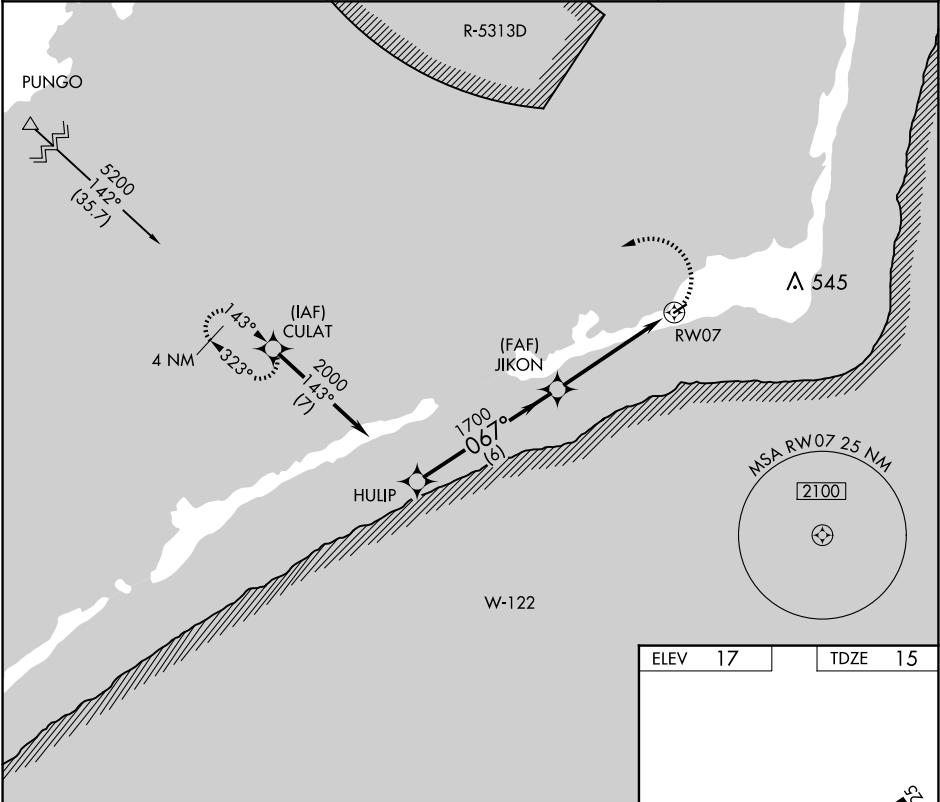
▼

NA

Procedure NA at night.
GPS or RNP-0.3 required.
DME/DME RNP-0.3 NA.

MISSED APPROACH: Climbing left turn
to 6000 direct CULAT WP and hold.

ASOS 118.375	CHERRY POINT APP CON 119.75 360.775	CTAF 122.9
------------------------	---	----------------------



SE-2, 10 JUL 2025 to 07 AUG 2025

SE-2, 10 JUL 2025 to 07 AUG 2025