

BOSCOBEL, WISCONSIN

AL-6361 (FAA)

24361

WAAS CH <b>77902</b> <b>W07A</b>	APP CRS <b>068°</b>	Rwy Idg <b>5000</b> TDZE <b>670</b> Apt Elev <b>673</b>
--	------------------------	---

RNAV (GPS) RWY 7  
BOSCOBEL (OVS)

RNP APCH - GPS.



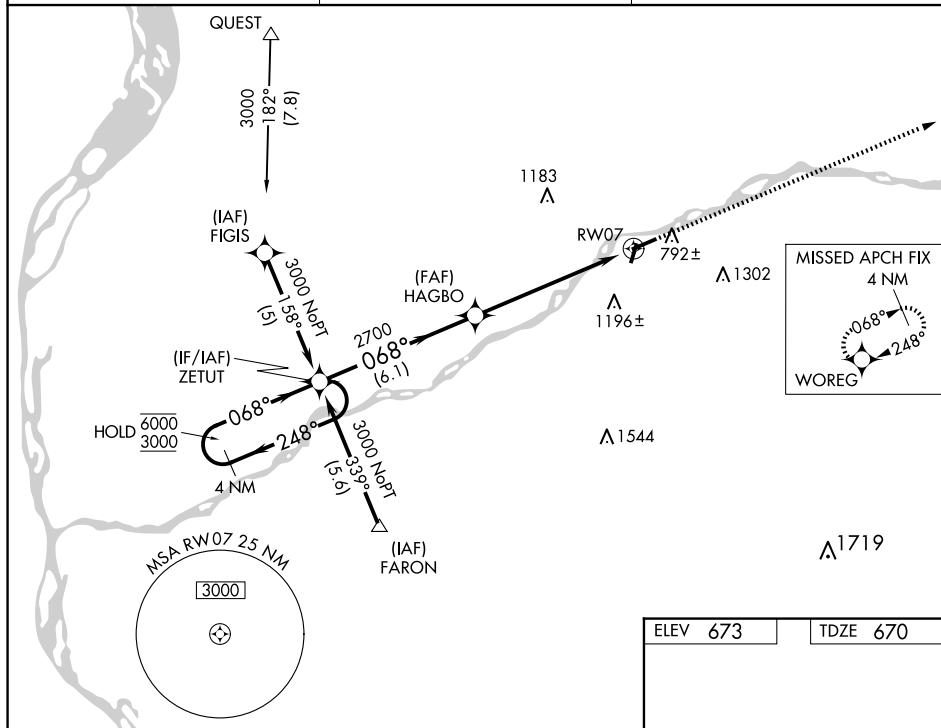
Circling Rwy 2, 20 NA at night. Rwy 7 helicopter visibility reduction below  $\frac{3}{4}$  SM NA.

MISSED APPROACH: Climb to 3000  
direct WOREG and hold.

ASOS  
126.775

CHICAGO CENTER  
133.3 257.925

UNICOM  
122.8 (CTAF) **L**



4 NM Holding Pattern

ZETUT

6000 ← 248°

3000 068° →

GP 3.00° TCH 38

HAGBO

2700

2700

2.7 NM to RW07

RW07

6.1 NM

3.5 NM

2.7 NM

3000	WOREG
------	-------

CATEGORY	A	B	C	D
LPV DA	1040-1¼ 370 (400-1¼)			NA
LNAV MDA	1560-1¼ 890 (900-1¼)		1560-2¾ 890 (900-2¾)	NA
CIRCLING	1560-1¼ 887 (900-1¼)	1580-1¼ 907 (1000-1¼)	1620-2¾ 947 (1000-2¾)	NA

BOSCOBEL, WISCONSIN  
Orig-C 26DEC24

43°10'N-90°40'W

BOSCOBEL (OVS)  
RNAV (GPS) RWY 7

EC-3, 10 JUL 2025 to 07 AUG 2025