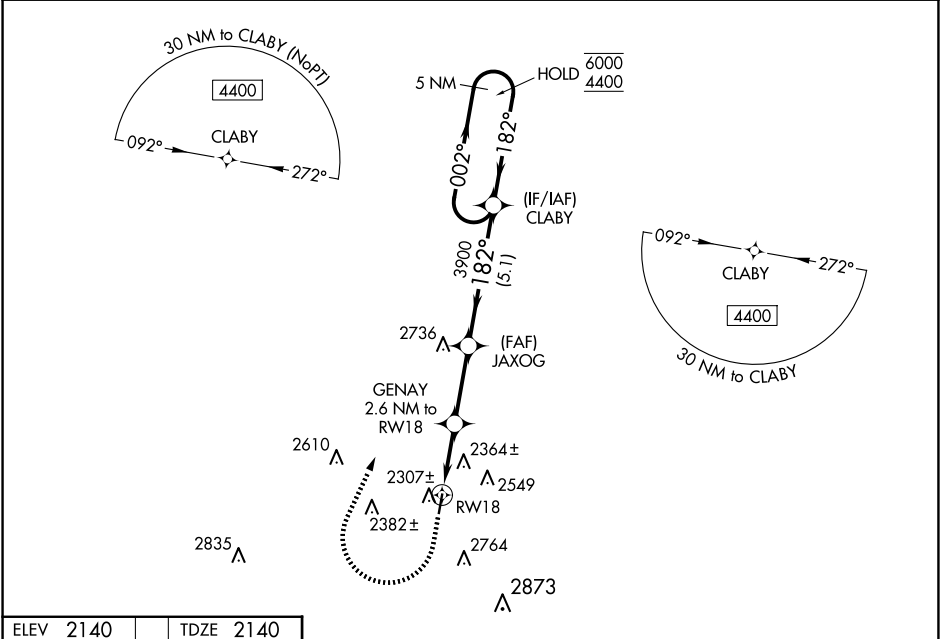


WAAS CH <b>72645</b> <b>W18A</b>	APP CRS <b>182°</b>	Rwy Idg <b>3944</b> TDZE <b>2140</b> Apt Elev <b>2140</b>
--	------------------------	---

RNAV (GPS) RWY 18

SONORA MUNI (SOA)

RNP APCH-GPS.		MISSED APPROACH: Climb to 2700 then climbing right turn to 4400 direct CLABY and hold.
<div><div></div><div></div></div> <div>Circling Rwy 36 NA at night. For uncompensated Baro-VNAV systems, LNAV/VNAV NA below -19°C or above 54°C.</div>		
AWOS-3 <b>118.075</b>	HOUSTON CENTER <b>125.75 346.4</b>	UNICOM <b>122.8 (CTAF) 0</b>



ELEV 2140

TDZE 2140

182°

81

4037 X 60

36

MIRL Rwy 18-36

REIL Rwy 18 and 36

2700

4400

CLABY

VGSI and RNAV glidepath not coincident  
(VGSI Angle 3.00/TCH 25).

5 NM Holding Pattern

002° → 6000

← 182° 4400

JAXOG

GENAY 2.6 NM to RW18

1.6 NM to RW18

RW18

3000

3900

CLABY

GP 3.00° TCH 40

1.6 NM

1 NM

2.8 NM

5.1 NM

CATEGORY	A	B	C	D
LPV DA	2425-1 285 (300-1)		NA	
LNAV/VNAV DA	2691-1 <sup>5</sup> / <sub>8</sub> 551 (600-1 <sup>5</sup> / <sub>8</sub> )		NA	
LNAV MDA	2680-1 540 (600-1)		NA	
CIRCLING	3040-1 <sup>1</sup> / <sub>4</sub> 900 (900-1 <sup>1</sup> / <sub>4</sub> )	3080-1 <sup>1</sup> / <sub>4</sub> 940 (1000-1 <sup>1</sup> / <sub>4</sub> )	NA	