

WAAS CH 86847 W35A	APP CRS 347°	Rwy Ldg 4006 TDZE 442 Apt Elev 442
--	------------------------	---

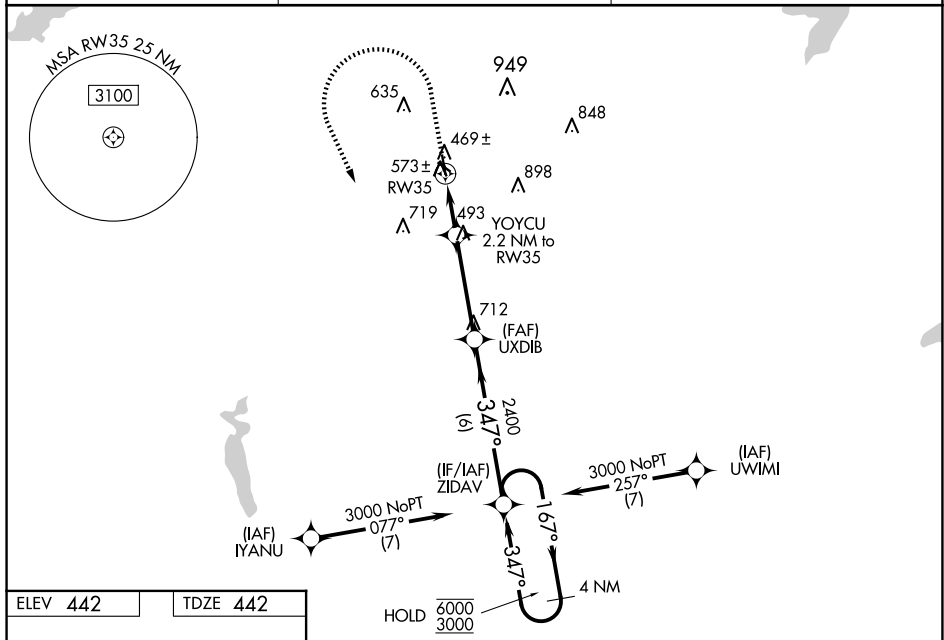
RNAV (GPS) RWY 35

RNP APCH - GPS.

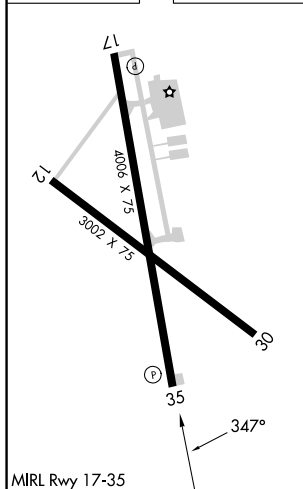
▼ Baro-VNAV and VDP NA when using GGG altimeter setting. For uncompensated
▲ Baro-VNAV systems, LNAV/VNAV NA below -15°C or above 54°C. Rwy 35 helicopter
 visibility reduction below $\frac{3}{4}$ SM NA. Circling Rwy 12, 17 and 30 NA at night. When local
 altimeter setting not received, use GGG altimeter setting and increase LPV DA to 740 feet;
 increase LNAV/VNAV DA to 904 feet and all visibilities $\frac{1}{4}$ SM. Increase all MDAs 60 feet
 and LNAV visibility Cat C $\frac{1}{4}$ SM, and Circling visibility Cat C $\frac{1}{4}$ SM.

MISSED APPROACH: Climb to 900 then climbing left turn to 3000 direct ZIDAV and hold.

AWOS-3 119.375	LONGVIEW APP CON ★ 124.275 257.975	UNICOM 122.8 (CTAF)
--------------------------	--	-------------------------------



ELEV 442		TDZE 442
----------	--	----------



<div>900 ↑</div> <div>3000 </div> <div>ZIDAV </div>			<div>4 NM Holding Pattern</div> <div></div>			
<div>CATEGORY</div>			A	B	C	D
LPV DA		692-1 250 (300-1)			NA	
RNAV/ RNAV DA		856-1½ 414 (500-1½)			NA	
RNAV MDA		840-1	398 (400-1)	840-1½ 398 (800-1½)	NA	
CIRCLING		920-1 478 (500-1)	960-1 518 (600-1)	1200-2¼ 758 (800-2¼)	NA	