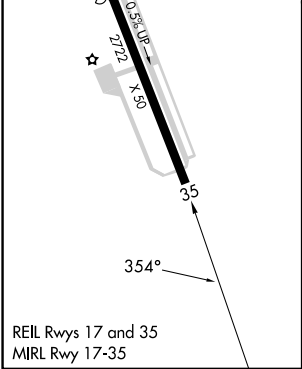
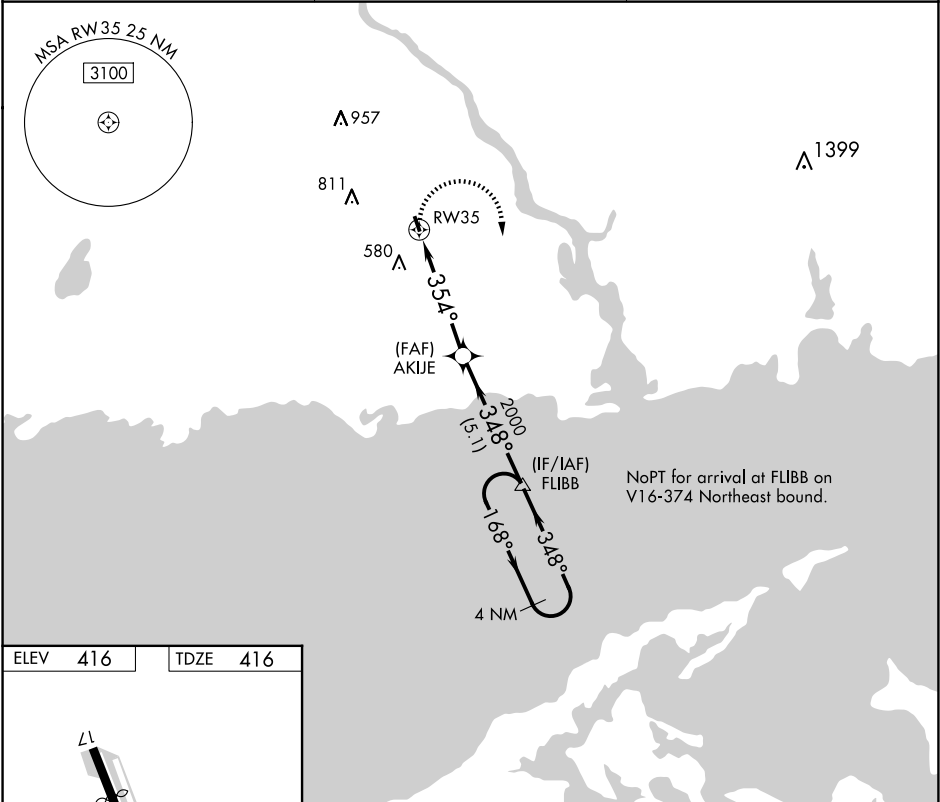



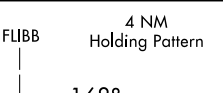
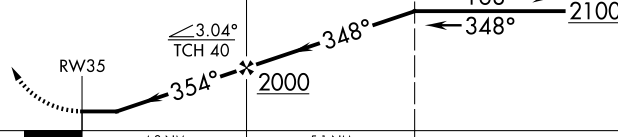
APP CRS	Rwy Idg	2722
354°	TDZE	416
	Apt Elev	416

RNAV (GPS) RWY 35
CHESTER (SNC)

<p>⚠ DME/DME RNP-0.3 NA. Procedure NA at night. Helicopter visibility reduction below 1 SM NA. When local altimeter setting not received, use Meriden altimeter setting and increase all MDA 100 feet.</p>	<p>MISSSED APPROACH: Climbing right turn to 2100 direct FLIBB and hold.</p>
--	---

AWOS-3 118.325	NEW YORK APP CON 124.075 343.65	UNICOM 122.725 (CTAF)
-------------------	------------------------------------	--------------------------



<div><div>2100</div><div>FLIBB</div><div></div></div>		<div><div>4 NM Holding Pattern</div><div></div></div>		
<div><div></div></div>				
CATEGORY	A	B	C	D
LNAV MDA	820-1	404 (500-1)	NA	
CIRCLING	920-1 504 (600-1)	1020-1 604 (700-1)	NA	

NE-1, 10 JUL 2025 to 07 AUG 2025

NE-1, 10 JUL 2025 to 07 AUG 2025