

APP CRS	Rwy Idg	2163
174°	TDZE	416
	Apt Elev	416

RNAV (GPS) RWY 17

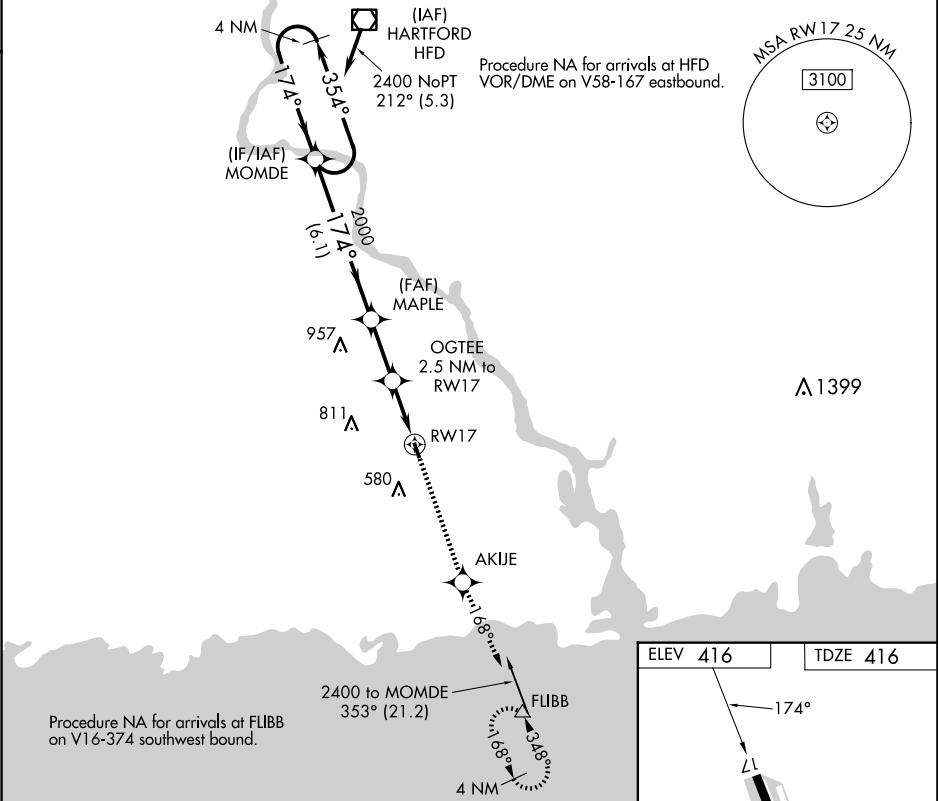
CHESTER (SNC)

▼ DME/DME RNP-0.3 NA. Procedure NA at night. Helicopter visibility reduction below 1 SM NA.

▲ When local altimeter setting not received, use Meriden altimeter setting and increase all MDA 100 feet.

MISSED APPROACH: Climb to 2100 direct AKIJE and via track 168° to FLIBB and hold.

AWOS-3 118.325	NEW YORK APP CON 124.075 343.65	UNICOM 122.725 (CTAF)
-------------------	------------------------------------	--------------------------



4 NM Holding Pattern MOMDE				2100	AKIJE	168° tr	FLIBB
				↑	✱		△
2400 ← 354° 174° → 2000				MAPLE			
				OGTEE 2.5 NM to RW17			
				1240			
6.1 NM				2.3 NM			
				2.5 NM			
CATEGORY	A		B	C		D	
LNAV MDA	960-1		544 (600-1)	NA			
CIRCLING	960-1		1020-1	NA			
	544 (600-1)		604 (700-1)				

