

| | | |
|--|------------------------|---|
| WAAS CH 82311 W22A | APP CRS 218° | Rwy Idg TDZE 1025 Apt Elev 1025 |
|--|------------------------|---|

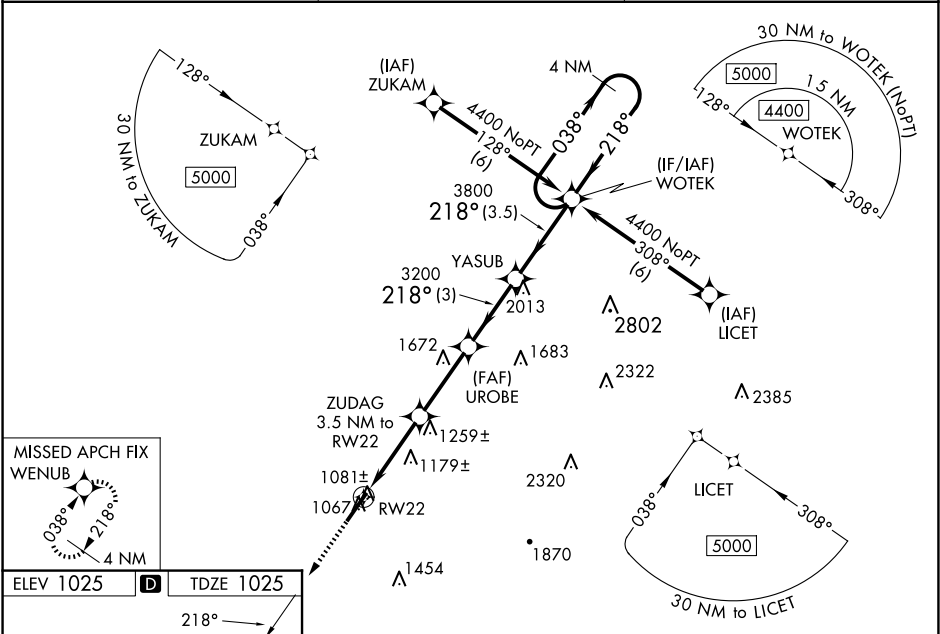
RNAV (GPS) RWY 22

UPPER CUMBERLAND RGNL (SR.B)

Baro-VNAV NA when using Crossville altimeter setting. For uncompensated Baro-VNAV systems, LNAV/VNAV NA below -17°C (2°F) or above 54°C (130°F). DME/DME RNP-0.3 NA. When local altimeter setting not received, use Crossville altimeter setting and increase LPV DA to 1447 feet, LNAV/VNAV DA to 1633 feet, increase LPV and LNAV/VNAV visibility ¾ SM. Increase all MDA 180 feet and LNAV Cat C visibility ¼ SM, Cat D visibility ½ SM. Increase Circling Cat C visibility ¾ SM and Circling Cat D visibility ¼ SM. VDP NA when using Crossville altimeter setting.

MISSED APPROACH:
Climb to 4000 direct WENUB and hold.

| | | |
|--------------------------|--------------------------------------|---------------------------------|
| AWOS-3P 128.25 | MEMPHIS CENTER 132.9 290.3 | UNICOM 122.975 (CTAF) |
|--------------------------|--------------------------------------|---------------------------------|



4000

↑

WENUB

✦

VGSI and RNAV glidepath not coincident

(VGSI Angle 3.00/TCH 25).

WOTEK

4 NM Holding Pattern

*LNAV only

RW22

*1.2 NM to RW22

*2200

UROBE

ZUDAG

3.5 NM to RW22

3200

YASUB

3800

218°

038°

4400

218°

GP 3.00°

TCH 55°

1.2 NM

2.3 NM

3 NM

3 NM

3.5 NM

| CATEGORY | A | B | C | D |
|--------------|----------------------|-------------|-------------------------|-------------------------|
| LPV DA | 1275-¾ 250 (300-¾) | | | |
| LNAV/VNAV DA | 1461-1½ 436 (500-1½) | | | |
| LNAV MDA | 1440-1 | 415 (500-1) | 1440-1¼ | 415 (500-1¼) |
| CIRCLING | 1480-1 | 455 (500-1) | 1600-1½ 575 (600-1½) | 1880-2¾ 855 (900-2¾) |

HIRL Rwy 4-22

REIL Rwys 4 and 22

RLS Rwy 4

①

①

①