

WAAS CH 69434 W18A	APP CRS 177°	Rwy Idg TDZE Apt Elev	4001 793 793
--	------------------------	-----------------------------	---

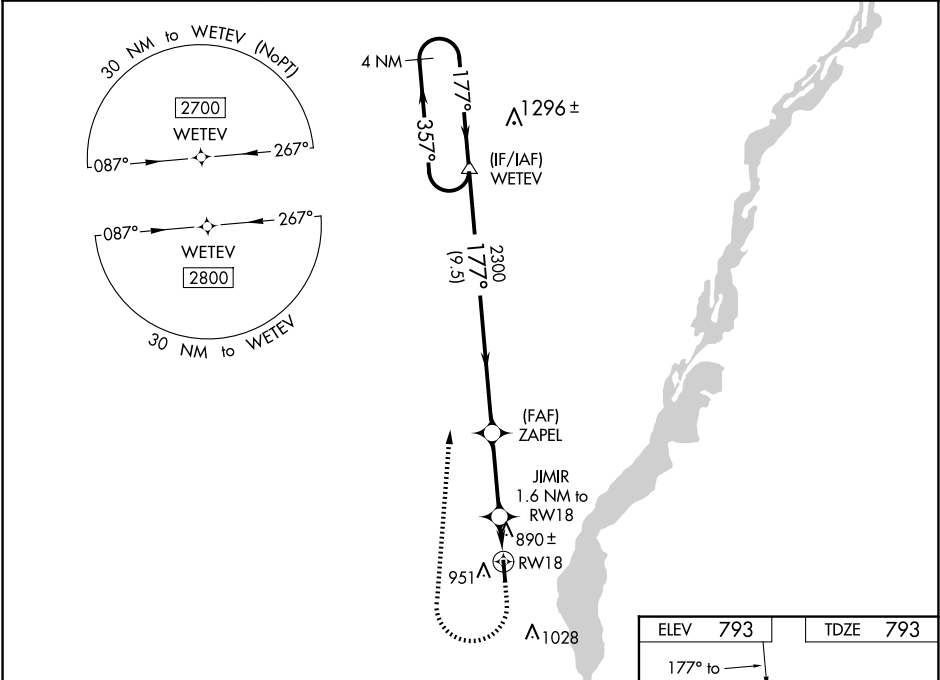
RNAV (GPS) RWY 18
MOUNT HAWLEY AUXILIARY (3MY)

NA

Circling to Rwy 36 NA at night. DME/DME RNP-0.3 NA. Baro-VNAV NA.
Use General Downing-Peoria Intl altimeter setting, when not received, use Lacon
altimeter setting: increase LPV DA to 1112 feet and all visibilities ½ mile, increase
LNAV/VNAV DA to 1228 feet and all visibilities ½ mile; increase all MDAs 40 feet
and visibility Cat C ½ SM. Rwy 18 helicopter visibility reduction below 1 SM NA.

MISSED APPROACH:
Climb to 1200 then
climbing right turn to
2700 direct WETEV
and hold.

PIA ASOS 126.1 282.2	SAINT LOUIS APP CON 125.8 269.2	CLINC DEL 121.6	UNICOM 122.7 (CTAF) 0
--------------------------------	---	---------------------------	---------------------------------



4 NM Holding Pattern WETEV

2700 ← 357°
177° →

GP 3.00°
TCH 40

2300

ZAPEL

JIMIR 1.6 NM to RW18

*1340

RW18

9.5 NM 3 NM 1.6 NM

CATEGORY	A	B	C	D
LPV DA	1082-1¼	289 (300-1¼)		NA
LNAV/VNAV DA	1198-1⅜	405 (500-1⅜)		NA
LNAV MDA	1180-1	387 (400-1)	1180-1⅛ 387 (400-1⅛)	NA
CIRCLING	1360-1	567 (600-1)	1420-1¾ 627 (700-1¾)	NA

