

WAAS CH 56330 W15A	APP CRS 155°	Rwy Idg TDZE Apt Elev	5201 4038 4038
--	------------------------	-----------------------------	---

RNAV (GPS) RWY 15

STERLING MUNI (STK)

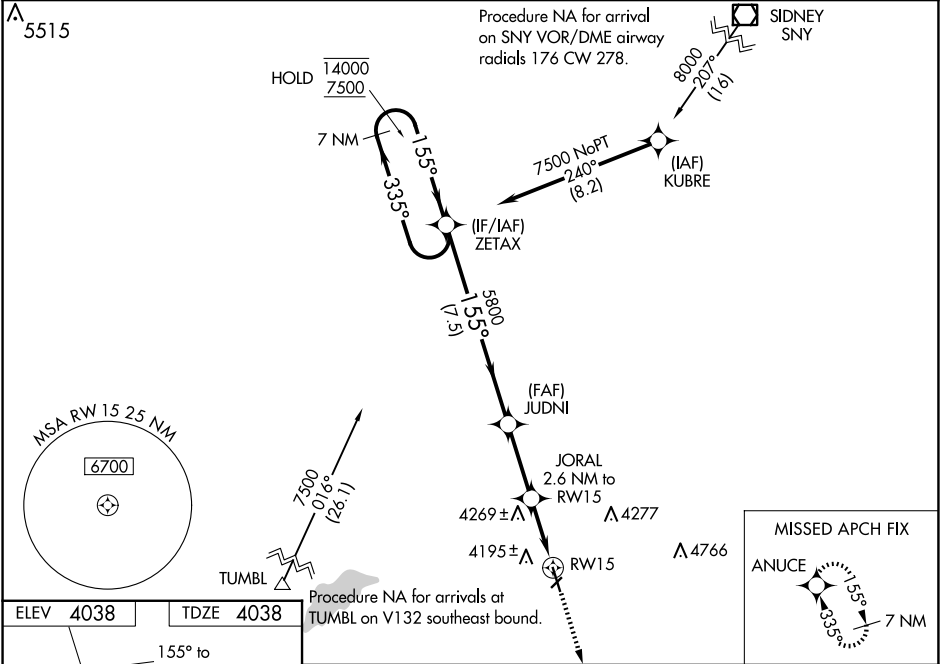
RNP APCH.

⚠

Circling NA to Rwy 4 and 22. Rwy 15 helicopter visibility reduction below ¾ SM NA. For uncompensated Baro-VNAV systems, LNAV/VNAV NA below -22°C or above 54°C.

MISSED APPROACH:
Climb to 6400 direct ANUCE and hold.

AWOS-3 118.525	DENVER CENTER 118.475 225.4	UNICOM 122.8 (CTAF)
--------------------------	---------------------------------------	-------------------------------



7 NM Holding Pattern		ZETAX		JUDNI		JORAL 2.6 NM to RW15		<div>6400 ↑</div> <div>ANUCE ✱</div>	
14000 ← 335° 7500 → 155°				5800		*1.3 NM to RW15		*LNAV only.	
GP 3.00° TCH 44		5800		*4900		RW15			
		7.5 NM		2.8 NM		1.3		1.3	
CATEGORY	A	B	C	D					
LPV DA	4288-1 250 (300-1)								
LNAV/ VNAV DA	4288-1 250 (300-1)								
LNAV MDA	4480-1	442 (500-1)	4480-1⅓		442 (500-1⅓)				
CIRCLING	4520-1 482 (500-1)	4580-1 542 (600-1)	4620-1½ 582 (600-1½)		4720-2¼ 682 (700-2¼)				

SW-1, 10 JUL 2025 to 07 AUG 2025

SW-1, 10 JUL 2025 to 07 AUG 2025