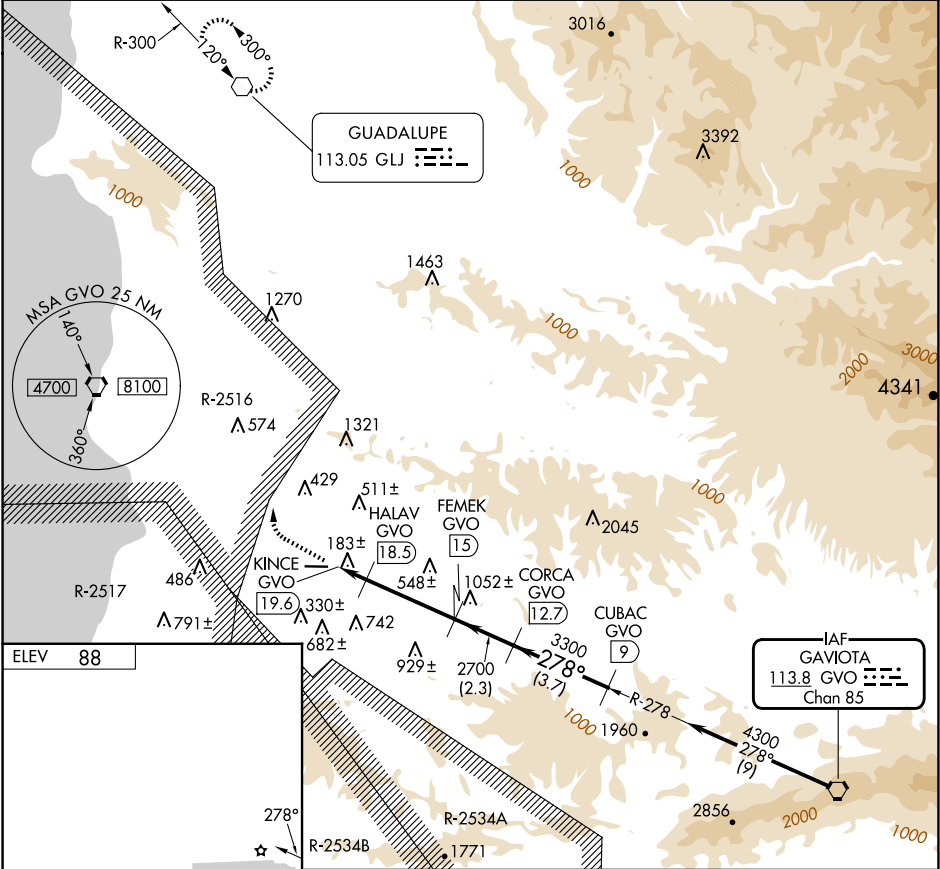


VORTAC GVO 113.8 Chan 85	APP CRS 278°	Rwy Ldg TDZE Apt Elev N/A N/A 88	VOR/DME-A LOMPOC (LPC)
--	------------------------	--	---------------------------

Procedure NA at night.

MISSED APPROACH: Climb to 1400, then climbing right turn to 3500 direct GLJ VOR and hold.

AWOS-3PT 133.875	SANTA BARBARA APP CON★ 124.15 327.8	UNICOM 122.7 (CTAF) 0
----------------------------	---	--



ELEV 88

4600 X 100

25

1400

3500

GLJ

VGSI and descent angles not coincident (VGSI Angle 3.25/TCH 25).

KINCE GVO 19.6

HALAV GVO 18.5

FEME K GVO 15

CORCA GVO 12.7

CUBAC GVO 9

Procedure Turn NA

0.4

1.1 NM

3.5 NM

2.3 NM

3.7 NM

CATEGORY	A	B	C	D
CIRCLING	1340-1¼ 1252 (1300-1¼)	1340-1½ 1252 (1300-1½)	NA	