

APP CRS
256°

Rwy Ldg
TDZE
Apt Elev
88

4482
88
88

RNAV (GPS) RWY 25
LOMPOC (LPC)

RNP APCH.

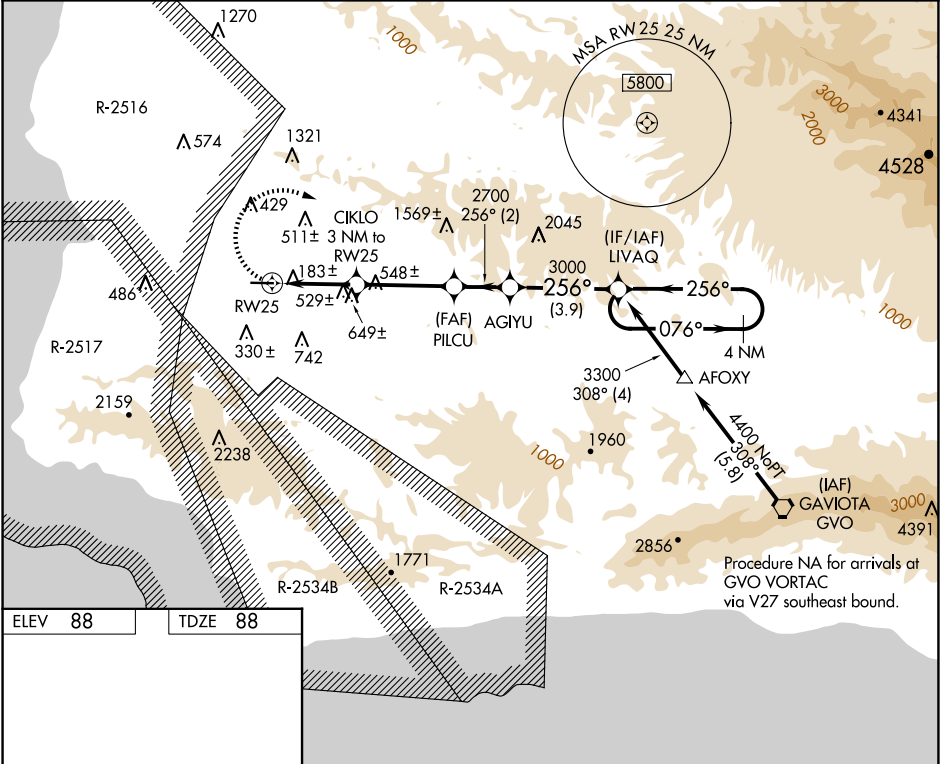
When local altimeter setting not received, use Santa Maria Pub/Capt G Allan Hancock Fld altimeter setting and increase all MDA 60 feet, and increase LNAV and Circling Cat B visibility ¼ SM. Procedure NA at night.

MISSED APPROACH: Climbing right turn to 3300 direct LIVAQ and hold.

AWOS-3PT
133.875

SANTA BARBARA APP CON★
124.15 327.8

UNICOM
122.7 (CTAF) 0



ELEV 88 TDZE 88

3300	LIVAQ	VGSI and descent angle not coincident (VGSI Angle 3.25/TCH 25).	4 NM Holding Pattern	
		AGIYU	LIVAQ	
3 NM	3.5 NM	2 NM	3.9 NM	
CATEGORY	A	B	C	D
LNAV MDA	1000-1¼	912 (1000-1¼)	NA	
CIRCLING	1000-1¼	912 (1000-1¼)	NA	

REIL Rwy 25 0

MIRL Rwy 7-25 0