

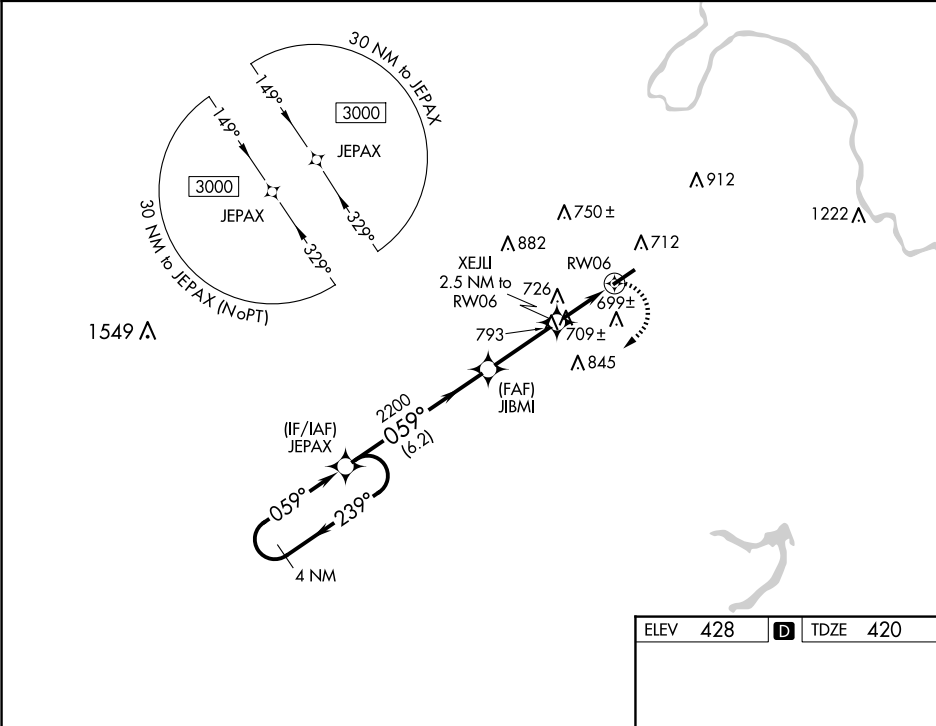
WAAS CH 56527 W06A	APP CRS 059°	Rwy Idg 4999 TDZE 420 Apt Elev 428
--	------------------------	---

RNAV (GPS) RWY 6

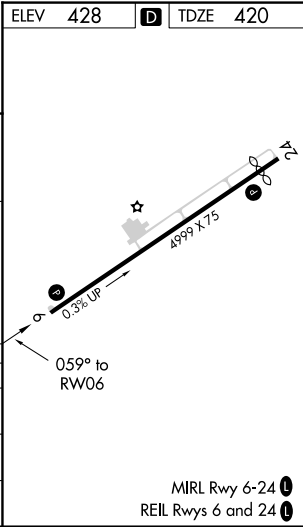
MUHENBERG COUNTY (M21)

RNP APCH - GPS.	<p>When local altimeter setting not received, use Owensboro altimeter setting and increase all MDAs 80 feet and LP visibility Cat C/D $\frac{1}{4}$, LNAV visibility Cat B/C/D $\frac{1}{4}$, and Circling visibility Cat B/C/D $\frac{1}{4}$. Rwy 6, helicopter visibility reduction below $\frac{3}{4}$ SM NA. Circling Rwy 24 NA at night.</p>	MISSED APPROACH: Climbing right turn to 3000 direct JEPAX and hold.
-----------------	---	--

AWOS-3 120.45	CAMPBELL APP CON ★ 118.1 269.525	UNICOM 123.0 (CTAF) 0
-------------------------	--	---------------------------------



4 NM Holding Pattern		JEPAX		VGSI and descent angles not coincident (VGSI Angle 4.00/TCH 40).		3000		JEPAX	
3000		239°		059°		JIBMI		XEJLI	
				059°		3.00° TCH 40		2.5 NM to RW06	
				2200		1240		RW06	
		6.2 NM		3 NM		2.5 NM			
CATEGORY		A		B		C		D	
LP MDA		960-1 540 (600-1)				960-1½ 540 (600-1½)			
LNAV MDA		1100-1 680 (700-1)				1100-1⅞ 680 (700-1⅞)			
CIRCLING		1100-1 672 (700-1)				1180-2¼ 752 (800-2¼)		1200-2½ 772 (800-2½)	



SE-1, 10 JUL 2025 to 07 AUG 2025

SE-1, 10 JUL 2025 to 07 AUG 2025