

WAAS CH <b>99627</b> <b>W24A</b>	APP CRS <b>239°</b>	Rwy Idg TDZE <b>425</b> Apt Elev <b>428</b>
--	------------------------	---

RNAV (GPS) RWY 24

MUHLENBERG COUNTY (M21)

RNP APCH - GPS.

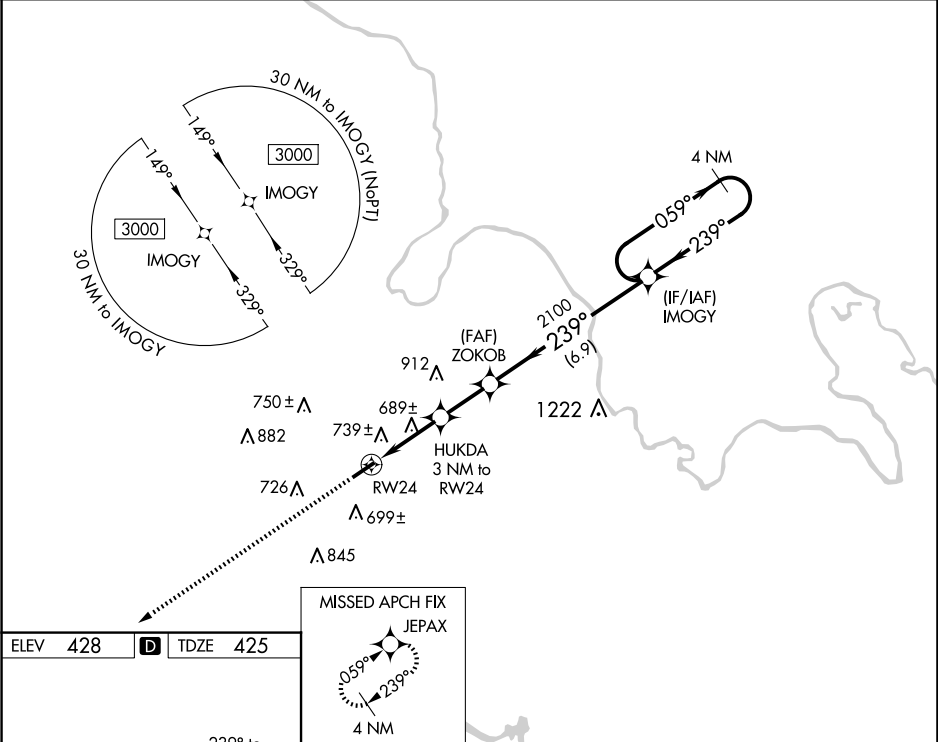
▼

▲ NA

When local altimeter setting not received, use Owensboro altimeter setting and increase all MDAs 80 feet. Increase LP Cats C/D visibility ¾ SM and LNAV Cats C/D and Circling Cats C/D visibility ¼ SM. Procedure NA at night. Rwy 24, helicopter visibility reduction below 1 SM NA.

MISSED APPROACH:  
Climb to 3000 direct JEPAX and hold.

AWOS-3 <b>120.45</b>	CAMPBELL APP CON ★ <b>118.1 269.525</b>	UNICOM <b>123.0 (CTAF) 0</b>
-------------------------	--	---------------------------------



ELEV 428 **D** TDZE 425

MIRL Rwy 6-24 0  
REIL Rws 6 and 24 0

Visual Segment - Obstacles.				
RW24		ZOKOB		
3 NM		2.1 NM		6.9 NM
CATEGORY	A	B	C	D
LP MDA	940-1	515 (600-1)	940-1⅓	515 (600-1⅓)
LNAV MDA	1000-1	575 (600-1)	1000-1⅝	575 (600-1⅝)
CIRCLING	1040-1 612 (700-1)	1100-1 672 (700-1)	1180-2¼ 752 (800-2¼)	1200-2½ 772 (800-2½)