

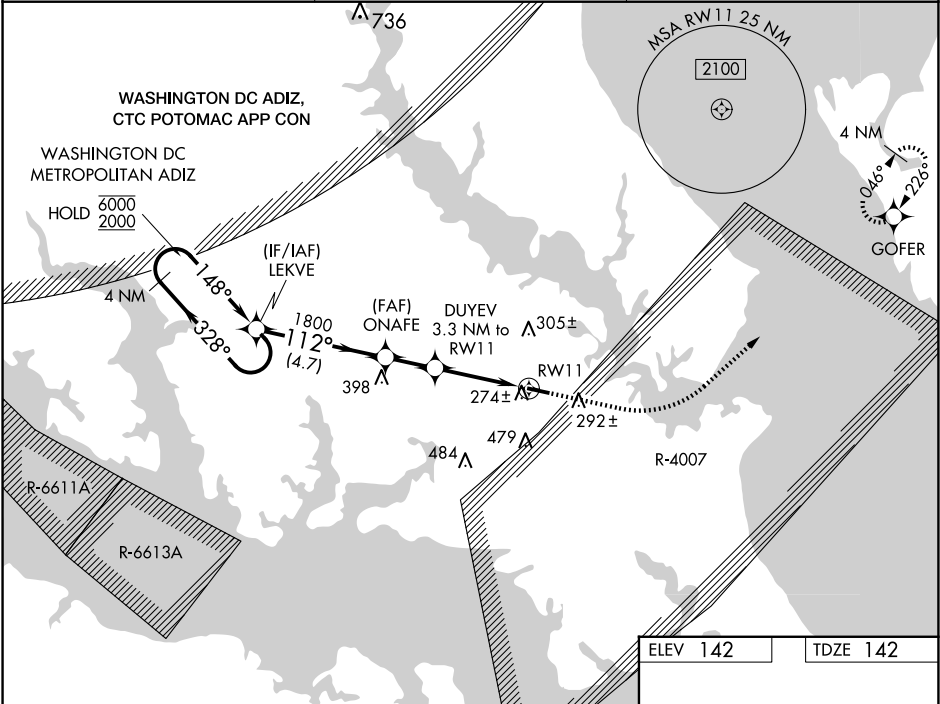
WAAS CH 70502 W11A	APP CRS 112°	Rwy Idg TDZE 142 Apt Elev 142	5350
--	------------------------	---	-------------

RNAV (GPS) RWY 11

ST MARY'S COUNTY RGNL (2W6)

RNP APCH - GPS.	<div><div>▼</div> Circling Rwy 29 NA at night. Rwy 11 helicopter visibility reduction below ¾ SM NA. <div>▲</div> NA For uncompensated Baro-VNAV systems, LNAV/VNAV NA below -15°C or above 54°C.</div>	MISSED APPROACH: Climb to 620 then climbing left turn to 2000 direct GOFER and hold.
-----------------	---	--

AWOS-3 119.575	PATUXENT APP CON ★ 121.0 250.3	UNICOM 123.0 (CTAF) 0
--------------------------	--	---------------------------------



4 NM Holding Pattern		LEKVE		620	2000	GOFER
6000 ← 328°		112°				
2000 → 148°		1800				
GP 3.00°		1220				
TCH 42		1800				
		ONAFE				
		DUYEV 3.3 NM to RW11				
		1.1 NM to RW11				
		RW11				
		4.7 NM				
		1.8 NM				
		2.1 NM				
		1.1 NM				
CATEGORY	A	B	C	D		
LPV DA	419-1		277 (300-1)			
LNAV/VNAV DA	503-1		361 (400-1)			
LNAV MDA	540-1	398 (400-1)	540-1½	398 (400-1½)		
CIRCLING	660-1	518 (600-1)	840-2 698 (700-2)	840-2¼ 698 (700-2¼)		

REIL Rwy 11 and 29 0

MIRL Rwy 11-29 0