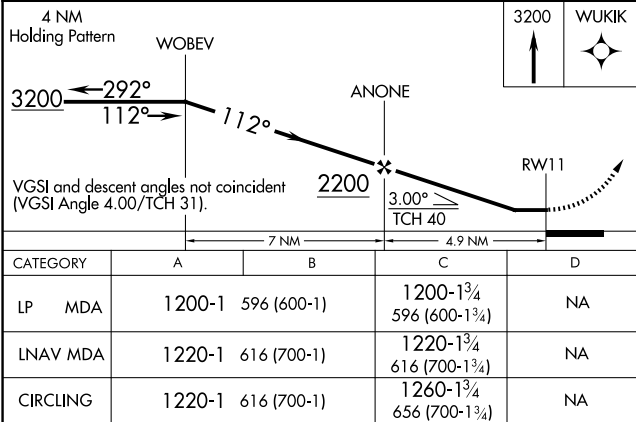
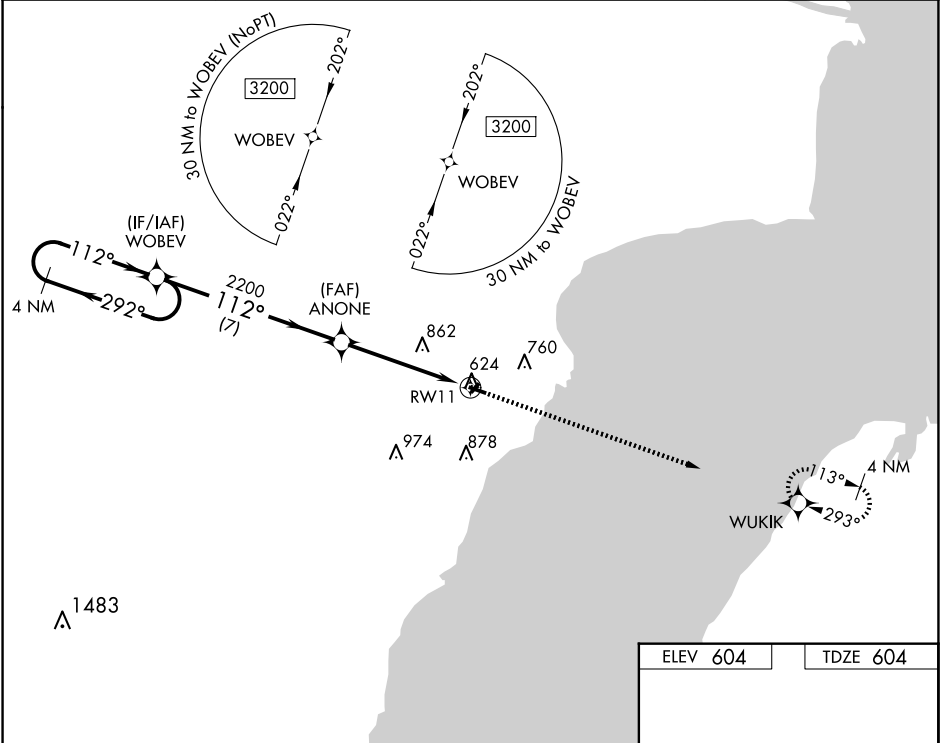


WAAS CH 99629 W11A	APP CRS 112°	Rwy Idg 3199 TDZE 604 Apt Elev 604
--	------------------------	---

RNAV (GPS) RWY 11

OCONTO/J DOUGLAS BAKE MUNI (OCQ)

RNP APCH - GPS.			MISSED APPROACH: Climb to 3200 direct WUKIK and hold.
▼ When local altimeter setting not received, use Menominee, MI altimeter setting. Procedure NA at night. Rwy 11 helicopter visibility reduction below ¾ SM NA. Circling NA to Rwy 4 and 22.			
AWOS-3 120.925	MNM AWOS-3PT 121.45	GREEN BAY APP CON ★ 120.3 338.2	UNICOM 122.8 (CTAF) 0



ELEV 604		TDZE 604	
REIL Rwy 11 and 29 ①			
MIRL Rwy 11-29 ②			