

23166

VOR-A
PUTNAM COUNTY RGRL (GPC)

DME required.

MISSED APPROACH: Climb to 1700 then climbing right turn to 2500 on VHP VORTAC R-241 to AVAIL/18 DME and hold.

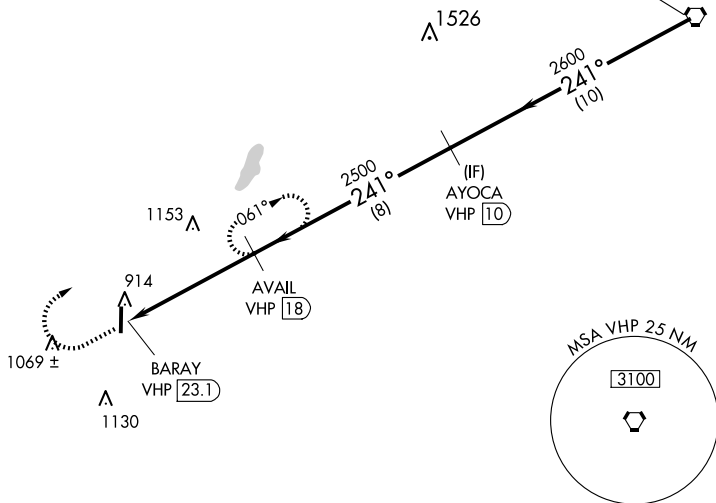
AWOS-3PT
118.125

INDIANAPOLIS APP CON
119.05 317.8

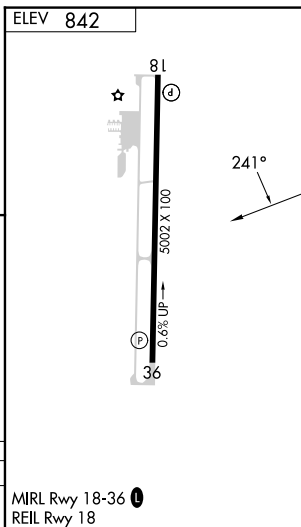
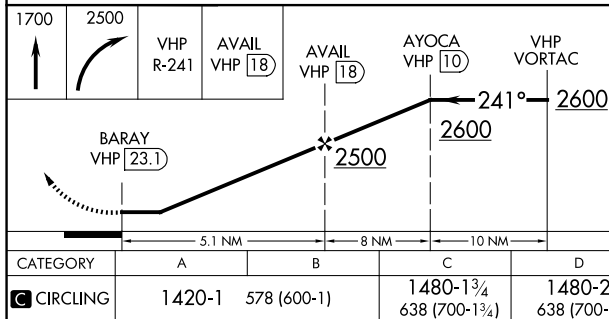
UN|COM
122.8 (CTAF) **L**

Procedure NA for arrival
on VHP VORTAC airway
radials 184 CW 278.

— IAF —
BRICKYARD
116.3 VHP : : : :
Chan 110



EC-2, 10 JUL 2025 to 07 AUG 2025



PUTNAM COUNTY RGNL (GPC)

39°38'N-86°49'W

VOR-A