

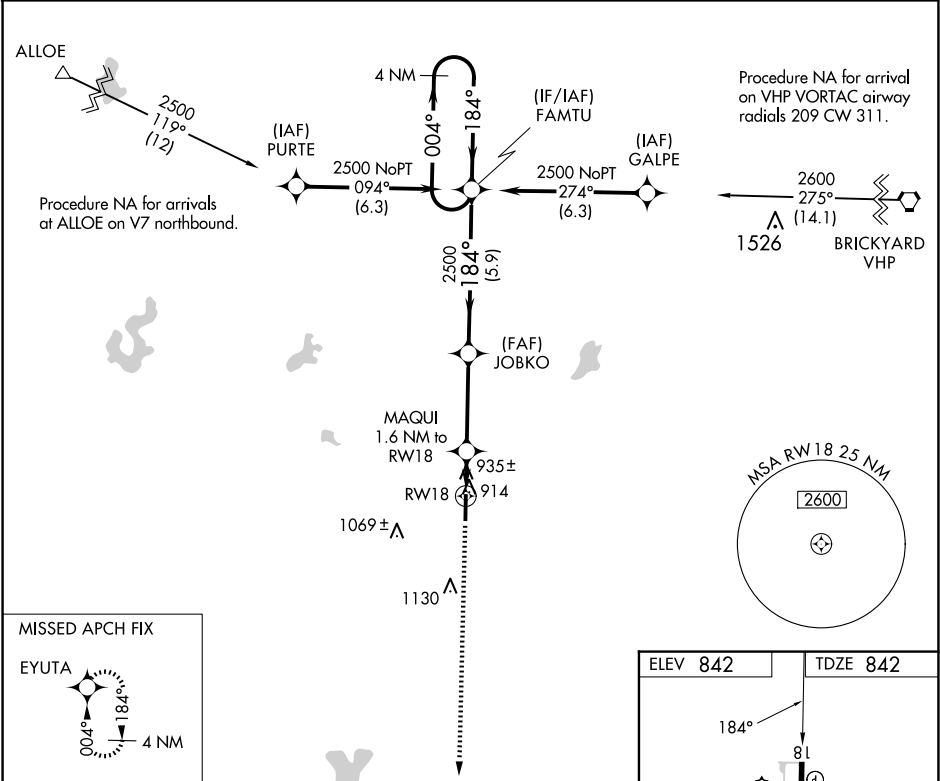
WAAS CH 86906 W18A	APP CRS 184°	Rwy Idg 5002 TDZE 842 Apt Elev 842
--	------------------------	---

RNAV (GPS) RWY 18

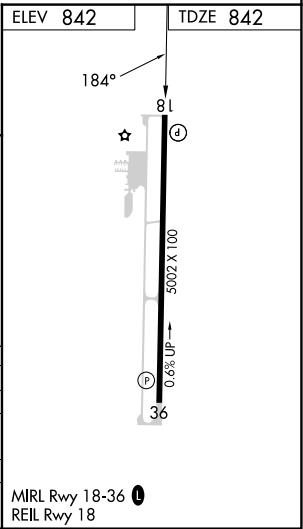
PUTNAM COUNTY RGNL (GPC)

<div><div></div><div>For uncompensated Baro-VNAV systems, LNAV/VNAV NA below -1.6°C (4°F) or above 54°C (130°F). Rwy 18 helicopter visibility reduction below ¾ SM NA. DME/DME RNP-0.3 NA.</div></div>	MISSED APPROACH: Climb to 2500 direct EYUTA and hold.
--	--

AWOS-3PT 118.125	INDIANAPOLIS APP CON 119.05 317.8	UNICOM 122.8 (CTAF) 0
----------------------------	---	---------------------------------



2500 ↑	EYUTA ✦	*LNAV only.	JOBKO 2500	FAMTU	4 NM Holding Pattern	
		MAQUI 1.6 NM to RW18	✖	← 184°	→ 004° → 2500	
		*1 NM to RW18	↙ 2500	← 184°		
		RW18	1380*		GP 3.00° TCH 30°	
		1 NM	0.6 NM	3.5 NM	5.9 NM	
CATEGORY		A		B	C	D
LPV DA				1107-7/8	265 (300-7/8)	
LNAV/ VNAV DA				1106-7/8	264 (300-7/8)	
LNAV MDA				1200-1	358 (400-1)	
CIRCLING		1280-1 438 (500-1)	1400-1 558 (600-1)	1480-1¾ 638 (700-1¾)	1480-2 638 (700-2)	



EC-2, 10 JUL 2025 to 07 AUG 2025

EC-2, 10 JUL 2025 to 07 AUG 2025