

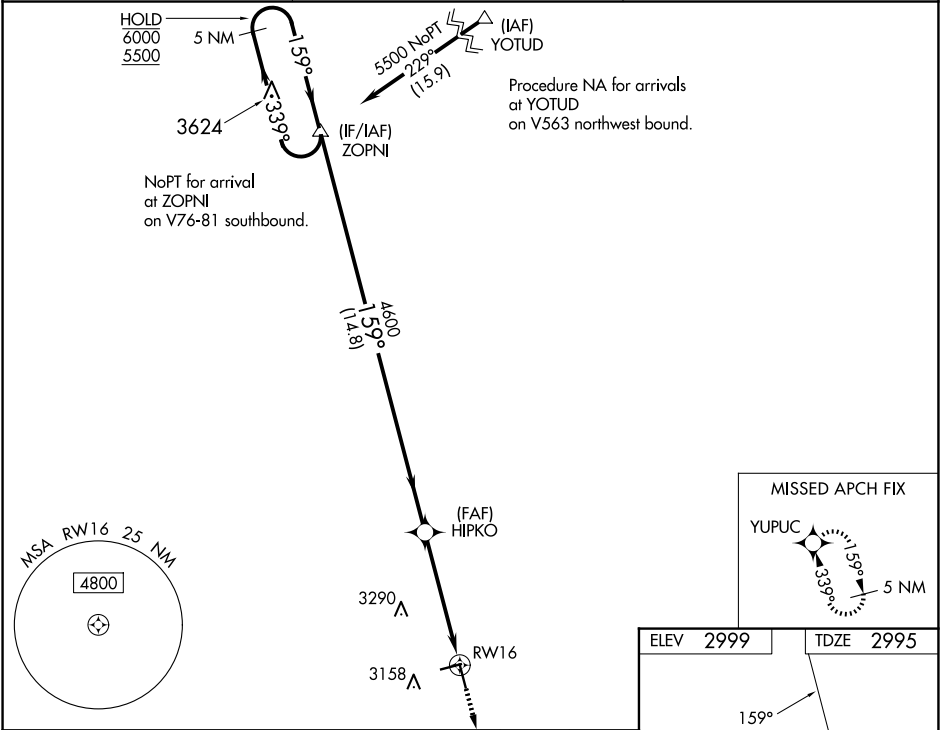
WAAS CH 70726 W16A	APP CRS 159°	Rwy Idg TDZE Apt Elev	5002 2995 2999
--	------------------------	-----------------------------	---

RNAV (GPS) RWY 16

LAMESA MUNI (LUV)

RNP APCH.	MISSED APPROACH: Climb to 5500 direct YUPUC and hold.
⚠ Circling Rwy 7, 25 NA at night. For uncompensated Baro-VNAV systems, LNAV/VNAV NA below -20°C or above 54°C.	

AWOS-3PT 124.175	FORT WORTH CENTER 132.6 269.05	UNICOM 122.8 (CTAF)
----------------------------	--	-------------------------------



5 NM Holding Pattern		VGSI and RNAV glidepath not coincident (VGSI Angle 3.00°/TCH 31).		5500	YUPUC
ZOPNI		HIPKO		*LNAV only.	
6000 ← 339°		4600		*1.5 NM to RWY 16	
5500 → 159°		3.4 NM		RWY 16	
GP 3.00° TCH 45		14.8 NM		1.5 NM	
CATEGORY	A	B	C	D	
LPV DA	3245-3/4		250 (300-3/4)		
LNAV/VNAV DA	3245-3/4		250 (300-3/4)		
LNAV MDA	3500-1	505 (600-1)	3500-1 3/8	505 (600-1 3/8)	
Ⓢ CIRCLING	3500-1	501 (600-1)	3700-2 701 (800-2)	3840-2 3/4 841 (900-2 3/4)	

