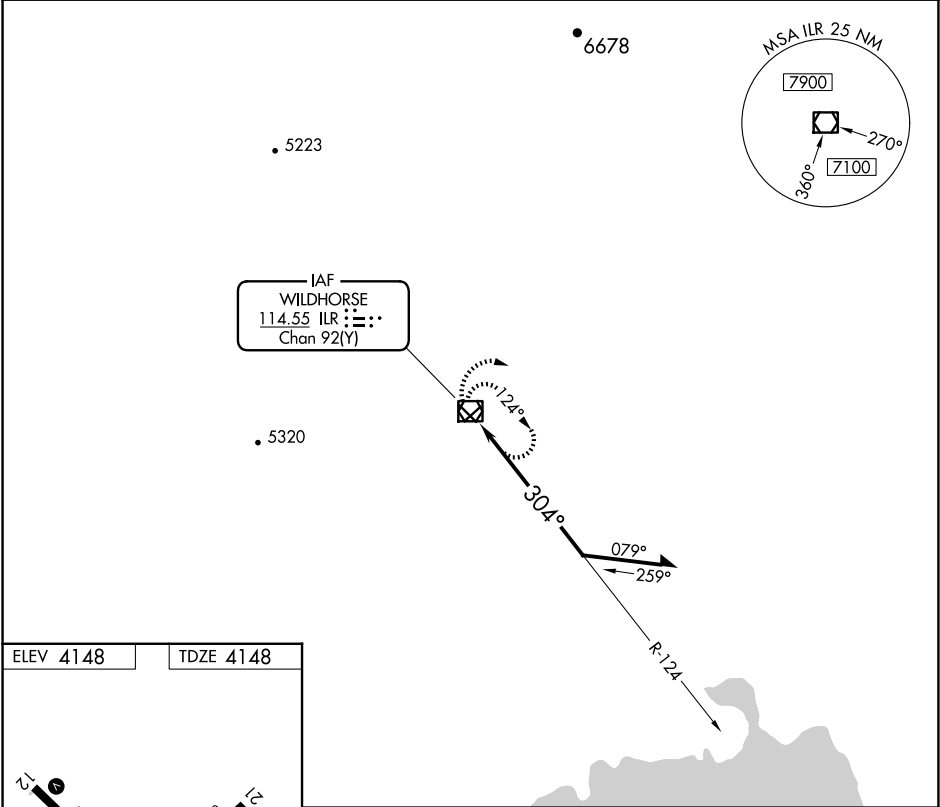


VOR/DME ILR 114.55 Chan 92 (Y)	APP CRS 304°	Rwy Idg TDZE Apt Elev	5101 4148 4148
--	------------------------	-----------------------------	---

VOR RWY 30
BURNS MUNI (BNO)

MISSED APPROACH: Climbing right turn to 8000 in ILR VOR/DME holding pattern.

ASOS 135.575	SALT LAKE CENTER 128.05 306.95	UNICOM 122.8 (CTAF)
------------------------	--	-------------------------------



ELEV 4148 TDZE 4148

REIL Rwys 3, 12, 21 and 30
MRL Rwys 3-21 and 12-30

ILR

ILR VOR/DME

Remain within 10 NM

ILR 4.5

124°

304°

7000

0.4 4.1 NM

CATEGORY	A	B	C	D
S-30	5500-1¼ 1352 (1400-1¼)	5500-1½ 1352 (1400-1½)	5500-3	1352 (1400-3)
CIRCLING	5500-1¼ 1352 (1400-1¼)	5500-1½ 1352 (1400-1½)	5500-3	1352 (1400-3)

NW-1, 10 JUL 2025 to 07 AUG 2025

NW-1, 10 JUL 2025 to 07 AUG 2025