

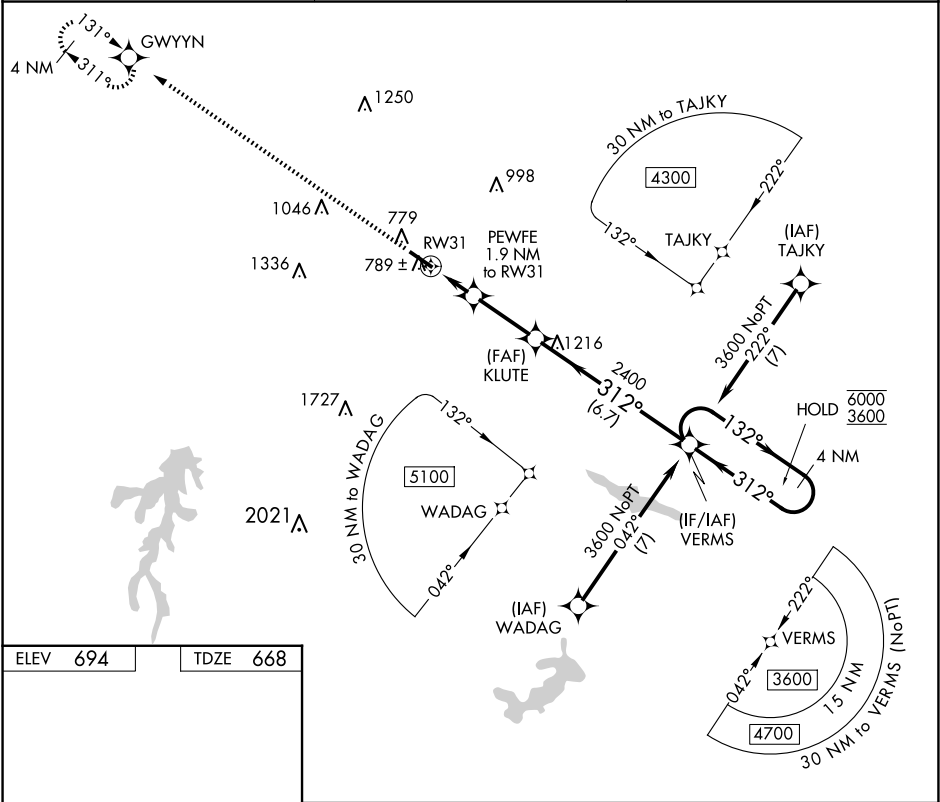
APP CRS  
**312°**

Rwy Idg  
TDZE  
Apt Elev

**5200**  
**668**  
**694**

**RNAV (GPS) RWY 31**  
ROCKINGHAM COUNTY NC SHILOH (SIF')

RNP APCH - GPS.		MISSED APPROACH: Climb to 3500 direct GWYNN and hold.
▼ VDP NA when using GSO altimeter setting. ▲ Rwy 31 helicopter visibility reduction below ¾ SM NA.		
AWOS-3 <b>119.775</b>	GREENSBORO APP CON <b>124.35 269.225</b>	UNICOM <b>122.8 (CTAF) 0</b>



ELEV 694 TDZE 668

REIL Rwy 13 and 31 0  
HIRL Rwy 13-31 0

3500	GWYNN	VERMS	4 NM Holding Pattern	
PEWFE 1.9 NM to RW31	KLUTE	VERMS	4 NM Holding Pattern	
0.9 NM to RW31	1400	2400	132° → 6000 ← 312° 3600	
0.9 NM	1 NM	2.7 NM	6.7 NM	
CATEGORY	A	B	C	D
LNAV MDA	1080-1	412 (400-1)	1080-1½	412 (400-1½)
CIRCLING	1280-1 586 (600-1)	1340-1 646 (700-1)	1360-1¾ 666 (700-1¾)	1440-2½ 746 (800-2½)