

WAAS CH 97416 W25A	APP CRS 252°	Rwy Ldg TDZE 643 Apt Elev 643
--	------------------------	---

RNAV (GPS) RWY 25

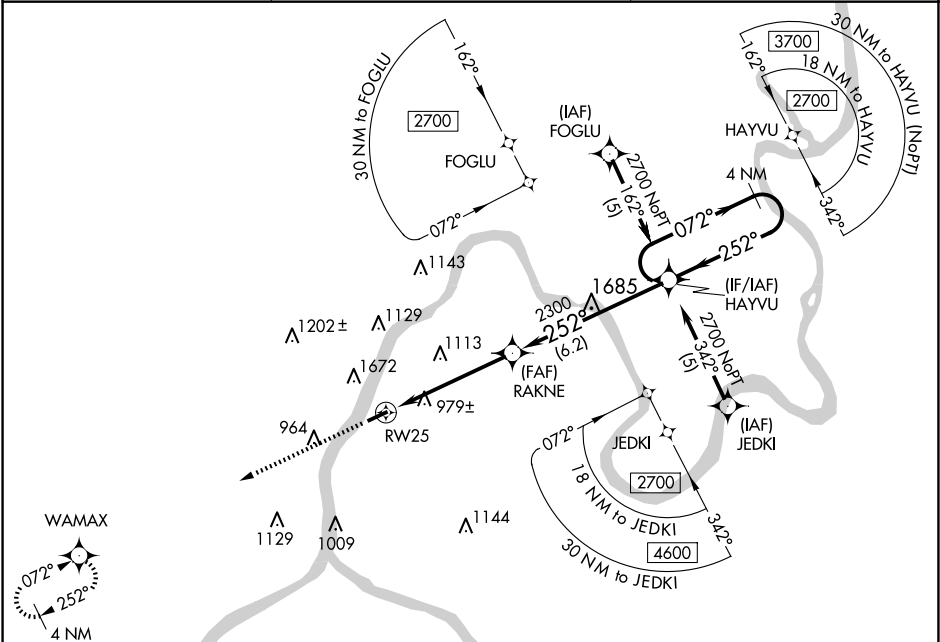
MASON COUNTY (3I2)

RNP APCH - GPS.

Circling NA NW of Rwy 7-25. Baro-VNAV NA when using UNI altimeter setting. For uncompensated Baro-VNAV systems, LNAV/VNAV NA below -16°C or above 47°C. Rwy 25 helicopter visibility reduction below ¾ SM NA. When local altimeter setting not received, use UNI altimeter setting and increase all DA 61 feet and all MDA 80 feet, increase LPV all Cats visibility ¼ mile and increase LNAV/VNAV all Cats visibility 1 mile. VDP NA when using UNI altimeter setting.

MISSED APPROACH:
Climb to 3200 direct
WAMAX and hold.

AWOS-3 119.675	HUNTINGTON APP CON 128.4 270.1	UNICOM 122.8 (CTAF) 0
--------------------------	--	---------------------------------



ELEV 643

TDZE 643

Diagram of RWY 25 with 4000 X 75 and 0.3% UP.

3200

WAMAX

↑

✴

VGSI and RNAV glidepath angles not coincident (VGSI Angle 3.00/TCH 43).

4 NM Holding Pattern

RAKNE

HAYVU

3.2 NM to RW25

072° → 2700

← 252°

252°

2300

GP 3.00° TCH 54

3.2 NM

1.8 NM

6.2 NM

CATEGORY	A	B	C	D
LPV DA	1430-2¾		787 (800-2¾)	
LNAV/VNAV DA	1727-4		1084 (1100-4)	
LNAV MDA	1700-1¼ 1057 (1100-1¼)	1700-1½ 1057 (1100-1½)	1700-3	1057 (1100-3)
CIRCLING	1700-1¼ 1057 (1100-1¼)	1700-1½ 1057 (1100-1½)	1700-3	1057 (1100-3)

REIL Rwys 7 and 25

MIRL Rwy 7-25