

APP CRS  
167°

Rwy Idg  
2901

TDZE  
574

Apt Elev  
574

RNAV (GPS) RWY 17

RALPH M HALL/ROCKWALL MUNI (F46)

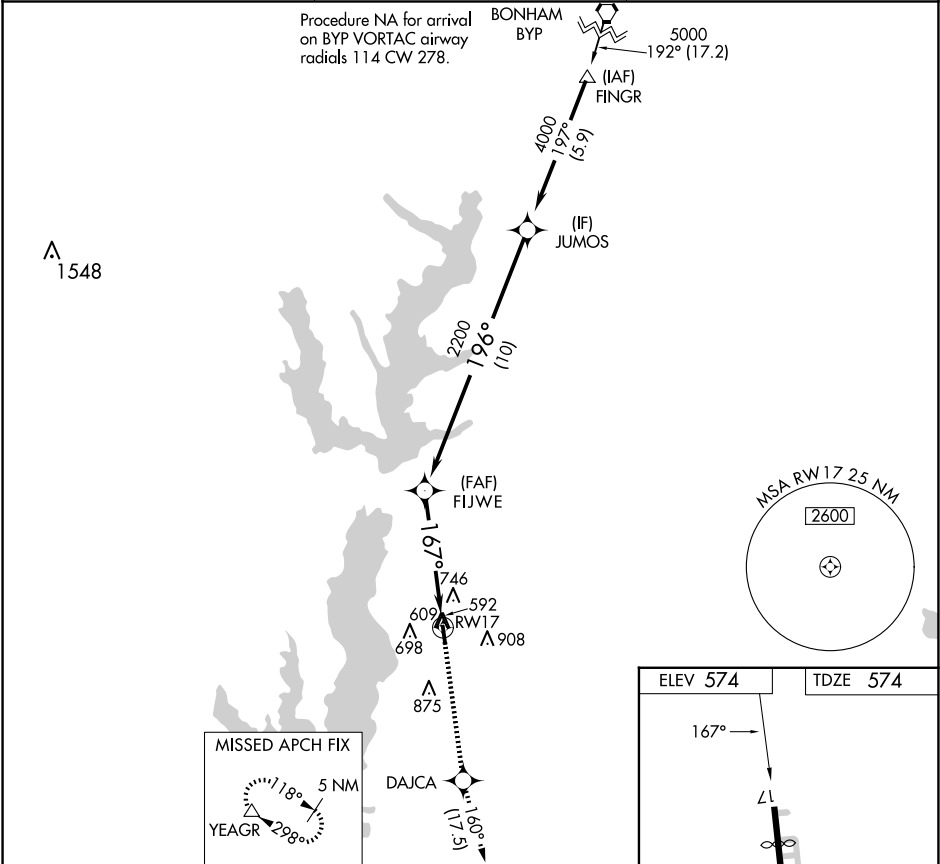
▼

▲

DME/DME RNP-0.3 NA. When local altimeter setting not received, use Dallas Love Fld altimeter setting and increase all MDA 80 feet. Helicopter visibility reduction below 1 SM NA. Procedure NA at night.

MISSED APPROACH: Climb to 5000 direct DAJCA and on track 160° to YEAGR and hold.

AWOS-3PT 121.25	LONE STAR APP CON 124.3 282.275	UNICOM 122.8 (CTAF) 0
--------------------	------------------------------------	--------------------------



JUMOS	5000	DAJCA	tr 160°	YEAGR
4000	FIJWE	3.00° TCH 40 RW17		
2200				
10 NM	5 NM			
CATEGORY	A	B	C	D
LNAV MDA	1140-1	566 (600-1)	NA	
CIRCLING	1280-1	706 (800-1)	NA	

LIRL Rwy 17-35 0

SC-2, 10 JUL 2025 to 07 AUG 2025

SC-2, 10 JUL 2025 to 07 AUG 2025