

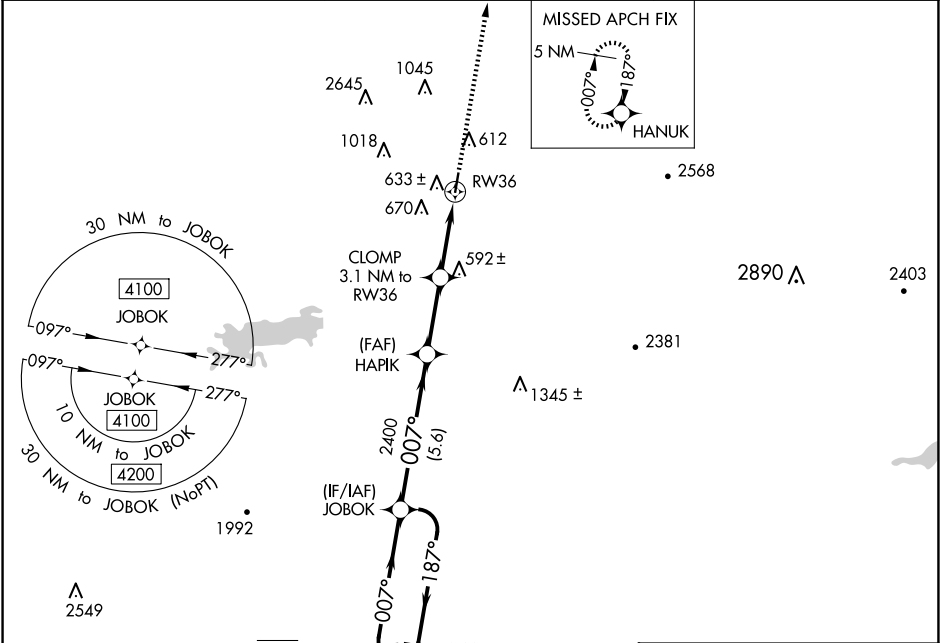
WAAS CH 61143 W36A	APP CRS 007°	Rwy Idg 4007 TDZE 451 Apt Elev 451
----------------------------------------	------------------------	---------------------------------------------------------------

RNAV (GPS) RWY 36

ROBERT S KERR (RKR)

RNP APCH.	MISSED APPROACH: Climb to 4100 direct HANUK and hold, continue to climb-in-hold to 4100.
<div><div>▼</div><div>Rwy 36 helicopter visibility reduction below ¾ SM NA. For uncompensated Baro-VNAV systems, LNAV/VNAV NA below -15°C or above 54°C.</div><div>▲</div></div>	

AWOS-3 120.625	RAZORBACK APP CON * 120.9 343.75	UNICOM 122.8 (CTAF) 0
--------------------------	--------------------------------------------	---------------------------------



5 NM Holding Pattern		JOBOK		HAPIK		CLOMP		HANUK	
6000 ← 187°		007° →		007°		3.1 NM to RW36		4100	
4100				2400		*1.1 NM to RW36		★	
GP 3.05°				*1500		RW36			
TCH 40									
		5.6 NM		2.8 NM		2 NM		1.1	
CATEGORY	A	B		C		D			
LPV DA	701-1		250 (300-1)						
LNAV/VNAV DA	786-1		335 (400-1)						
LNAV MDA	840-1		389 (400-1)		840-1½		389 (400-1½)		
CIRCLING	1000-1 549 (600-1)		1100-1 649 (700-1)		1100-1¾ 649 (700-1¾)		1160-2¼ 709 (800-1¼)		