

WAAS
CH **56443**
W18A

APP CRS
187°

Rwy Idg
TDZE **450**
Apt Elev **451**

RNAV (GPS) RWY 18

ROBERT S KERR (RKR)

RNP APCH.
Rwy 18 helicopter visibility reduction below ¾ SM NA. For uncompensated Baro-VNAV systems, LNAV/VNAV NA below -15°C or above 54°C.
Circling NA for Cats C and D west of Rwy 18-36.

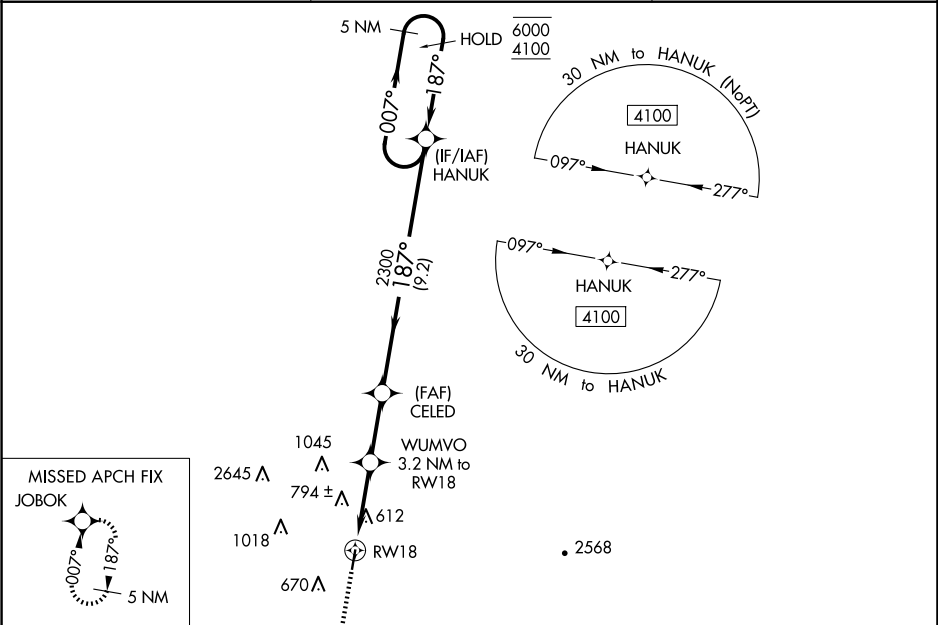
ODALS

MISSED APPROACH: Climb to 4100 direct JOBOK and hold, continue climb-in-hold to 4100.

AWOS-3
120.625

RAZORBACK APP CON ★
120.9 343.75

UNICOM
122.8 (CTAF) ①



ELEV 451

TDZE 450

REIL Rwy 36 ①

MIRL Rwy 18-36 ①

4100 JOBOK

WUMVO 3.2 NM to RW18

CELED

HANUK

5 NM Holding Pattern

* LNAV only

* 1.4 NM to RW18

1500*

1.4 NM 1.8 NM 2.5 NM 9.2 NM

CATEGORY	A	B	C	D
LPV DA	700-1	250 (300-1)		
LNAV/VNAV DA	926-1¾	476 (500-1¾)		
LNAV MDA	940-1	490 (500-1)	940-1¾	490 (500-1¾)
CIRCLING	1000-1 549 (600-1)	1100-1 649 (700-1)	1100-1¾ 649 (700-1¾)	1160-2¼ 709 (800-2¼)