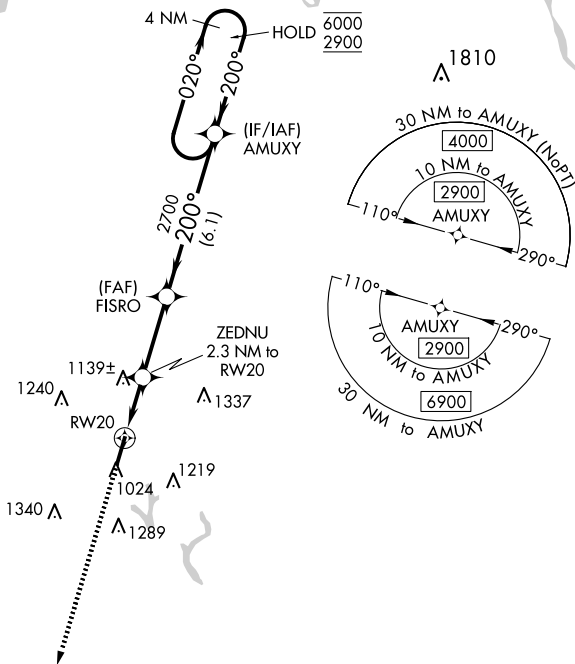


RNAV (GPS) RWY 20
CULLMAN RGNL/FOLSOM FLD (CMD)

MISSED APPROACH: Climb to 3200 direct MELYE and hold.

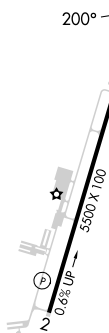
A Circling Rwy 2 NA at night. Rwy 20 helicopter visibility reduction below $\frac{3}{4}$ SM NA.

UNICOM
122.8 (CTAF) **L**

MISSED APCH FIX
MELYE

190° 190°
4 NM

ELEV 970		TDZE 970
----------	--	----------



3200
↑
MELYE

VGS and RNAV glidepath not coincident
(VGS Angle 3.00/TCH 33).

4 NM
Holding Pattern

AMUXY

020° → 6000
← 200° 2900

FISRO
2700

ZEDNU
2.3 NM to
RW20


1.2 NM to
RW20

RW20

1740

2700

GP 3.00°
TCH 50

CATEGORY		A	B	C	D
LPV	DA	1220-3/4		250 (300-3/4)	
LNAV/ VNAV	DA	1378-11/8		408 (500-11/8)	
LNAV	MDA	1400-1 430 (500-1)		1400-11/8 430 (500-11/8)	
 CIRCLING		1480-1 510 (600-1)	1500-1 530 (600-1)	1600-13/4 630 (700-13/4)	1640-2 670 (700-2)