

WAAS CH <b>40403</b> <b>W36A</b>	APP CRS <b>359°</b>	Rwy Idg <b>4002</b> TDZE <b>682</b> Apt Elev <b>691</b>
--	------------------------	---

RNAV (GPS) RWY 36

LITCHFIELD MUNI (3LF')

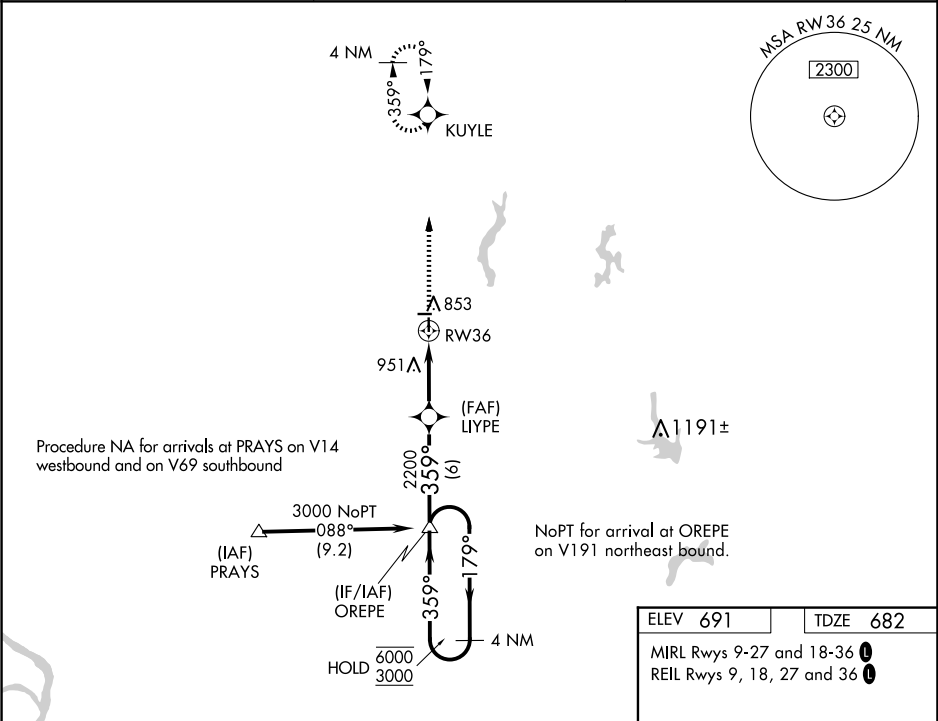
RNP APCH - GPS.

▼

Baro-VNAV and VDP NA when using Taylorville altimeter setting. For uncompensated Baro-VNAV systems, LNAV/VNAV NA below -16°C or above 54°C. When local altimeter setting not received, use Taylorville altimeter setting and increase LPV DA to 1005 feet and all visibilities ¼ SM, increase LNAV/VNAV DA to 1145 and all visibilities ¼ SM; increase all MDAs 80 feet and increase LNAV Cat C visibility ½ SM.

MISSED APPROACH: Climb to 3000 direct KUYLE and hold.

AWOS-3PT <b>118.175</b>	ST. LOUIS APP CON <b>124.2 353.9</b>	UNICOM <b>122.8 (CTAF) 0</b>
----------------------------	---	---------------------------------



ELEV <b>691</b>	TDZE <b>682</b>
MIRL Rwy 9-27 and 18-36 <b>1</b>	
REIL Rwy 9, 18, 27 and 36 <b>1</b>	

4 NM Holding Pattern		VGSI and RNAV glidepath not coincident (VGSI Angle 3.00/TCH 25).		3000 KUYLE
6000 3000		OREPE	LIYPE	RW36
GP 3.00° TCH 40		2200	1.4 NM to RW36	
6 NM		3.3 NM	1.4	
CATEGORY	A	B	C	D
LPV DA	932-3/4 250 (300-3/4)			NA
LNAV/VNAV DA	1072-1 390 (400-1)			NA
LNAV MDA	1140-1 458 (500-1)		1140-1 3/8 458 (500-1 3/8)	NA

